

Wheel loaders



**WACKER
NEUSON**
all it takes!



These reasons speak for wheel loaders from Wacker Neuson.

1. Full power – precisely for your requirements.

Optimally balanced performance level output characterizes every wheel loader from Wacker Neuson. In this way, you always get the power that you need in all classes – combined with maximum efficiency.

2. Full flexibility – for varied application all year round.

You can outfit a wheel loader from Wacker Neuson with different attachments time and time again for new jobs: from the traditional digging bucket to the pallet fork to the numerous special attachments for the construction industry, recycling, municipalities, and gardening and landscaping. In this way, you create exactly the all-rounder that you need.

3. Full economic efficiency – and in every respect.

High quality materials for a long service life. Economical in consumption. Good maneuverability for quick loading cycles. Maintenance that is done in no time. We at Wacker Neuson always consider economic efficiency as an overall concept.

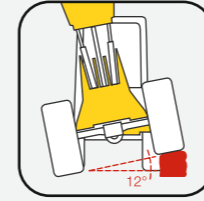
4. Your wheel loader as an attachment carrier

Use the wheel loaders from Wacker Neuson as you need them – the matching hydraulic performance and control circuits for additional functions make this possible.

Wacker Neuson – all it takes!

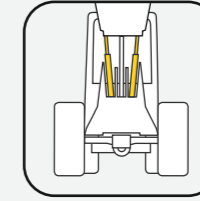
We offer products and services rendered that meet your high requirements and diverse applications. Wacker Neuson stands for reliability. This of course also applies to our large range of wheel loaders. We do our best every day to ensure your success. And we do this full of passion for our jobs.

Wheel loader expertise down to the last detail.



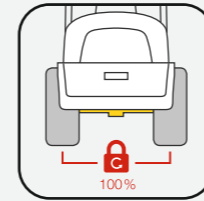
Maximum traction

Thanks to the articulated pendulum joint with 12° oscillating angle, all four wheels retain good traction, even in uneven ground conditions - and the operator maintains optimal control.



Two powerful lift cylinders

For even more stability of the loader system, all wheel loaders from Wacker Neuson are equipped with two lift cylinders. In this way, the hydraulic power is optimally distributed to the load arm.



Switchable 100% differential lock

The switchable 100% differential lock gives you good traction even on difficult surfaces.



High-quality powder coating

In comparison to conventional wet varnishing, powder coating greatly extends the service life of the machine. It is also environmentally friendly.

Wheel loaders always in focus with EquipCare.

With our Telematics solution, EquipCare, you give your machines a voice. Machines equipped with the Telematics module actively report in, for example to inform you of upcoming maintenance or possible malfunctions. For these machines, our EquipCare Dual ID is also available as an option. This is an electronic access control. Thus, you can specify exactly who can operate your machines, thus increasing security on your construction site.



All wheel loaders in an overview.



WL20e

Bucket capacity: 0.19 m³
> Page 04



WL20

0.19 m³



WL25

0.30 m³



WL28

0.42 m³



WL32

0.47 m³



WL38

0.64 m³



WL52

0.85 m³



WL34

Bucket capacity: 0.62 m³



WL44

0.80 m³



WL54

0.90 m³



WL60

1.00 m³



WL70

1.10 m³



WL95

1.55 m³



WL110

1.80 m³



The purely electrically operated wheel loader works with low-noise and is 100% emission-free on site, protecting the operator and the working environment

Powerful lithium-ion battery in three different sizes, onboard charger, and various charging plugs for maximum flexibility

Easy to handle, low maintenance effort, and therefore low service costs

Electric, practical, innovative: the electric wheel loader WL20e.

	WL20e
Bucket capacity (m ³)	0.19
Operating weight (kg)	2,170–2,350
Engine output (kW)	6.5*/8.5**
Tipping load of bucket, loading frame horizontal – angled machine (kg)	1,210–1,320

* Motor drive system ** Motor work hydraulics

Two electric motors, one for the drive system and one for the work hydraulics, allow for power to be accessed when needed and minimize consumption

Maintenance-free lithium-ion battery with integrated Battery Management System (BMS) makes handling the machine extremely safe

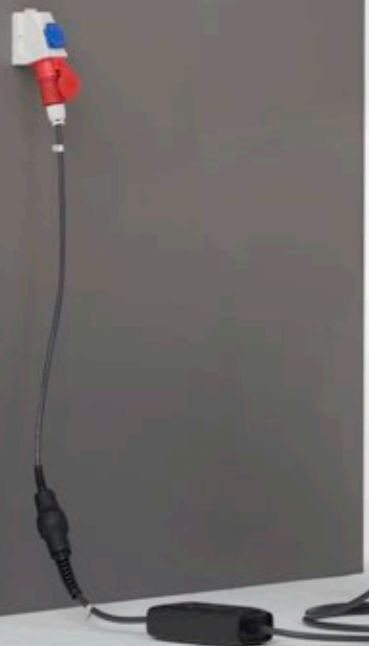
Fully enclosed cab with sophisticated heating concept enables year-round use (e.g. even during winter service)

The power of the WL20e corresponds to that of the diesel-powered WL20 wheel loader

The low noise level protects the operator and the working environment

Flexible intermediate charges possible at any time, no memory effect

Reduced service costs compared to the conventional diesel drive



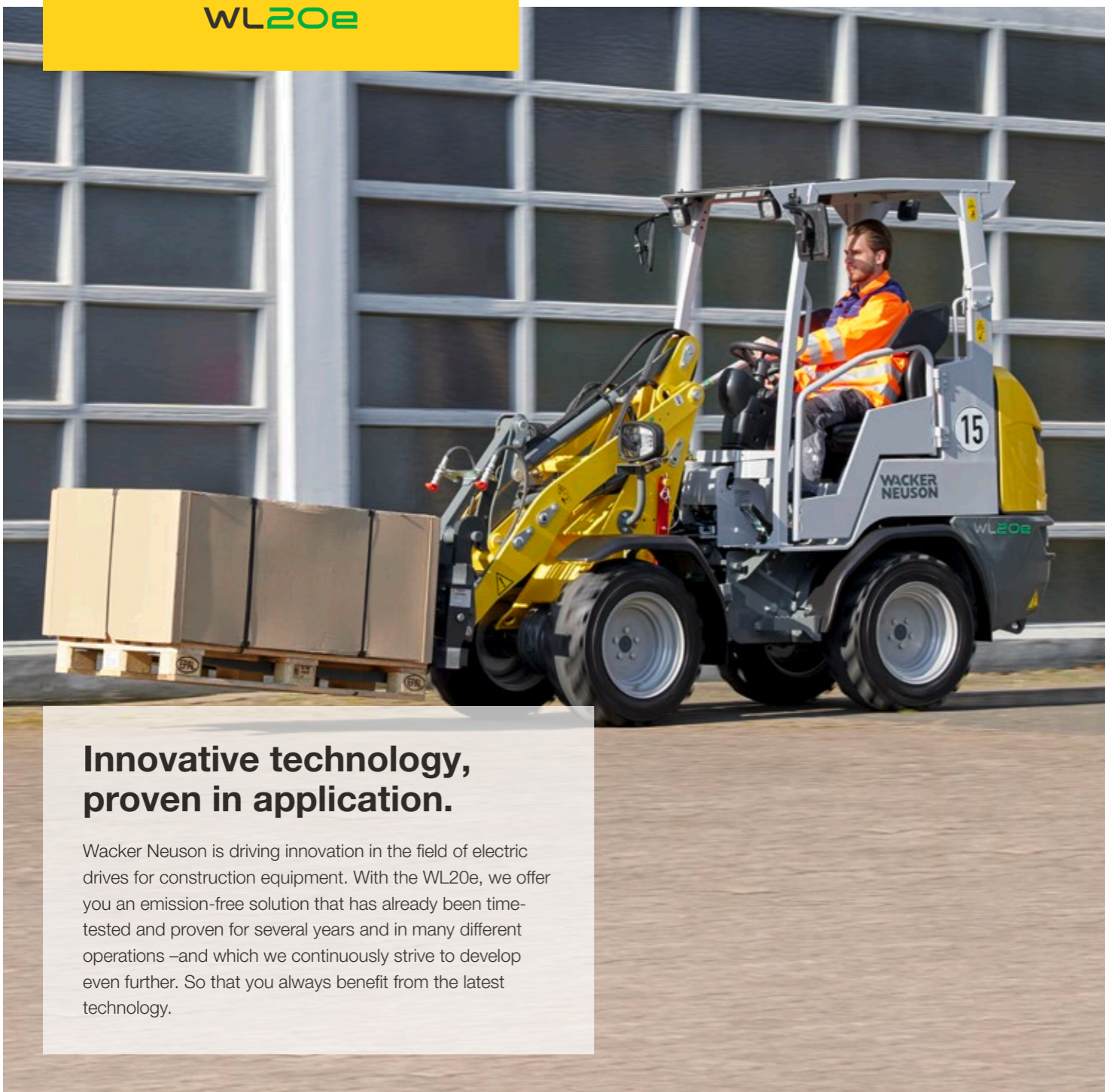
"Onboard" charger and different charging plugs allow for easy, flexible, and safe charging

Electric parking brake with auto-hold and hill-hold function for maximum safety and comfort

Optimized weight distribution for increased performance and mileage

Energy recovery through recuperation

Infinitely variable oil quantity adjustment of the 3rd control circuit enables the use of attachments operated with hydraulic continuous function



Innovative technology, proven in application.

Wacker Neuson is driving innovation in the field of electric drives for construction equipment. With the WL20e, we offer you an emission-free solution that has already been time-tested and proven for several years and in many different operations –and which we continuously strive to develop even further. So that you always benefit from the latest technology.

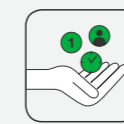
Powerful lithium ion battery.

- Three maintenance-free lithium-ion batteries to choose from to meet different runtime requirements: Standard 14.1 kWh, optional 18.7 kWh, or 23.4 kWh.
- Standard 3 kW onboard charger, optional additional 3 kW onboard charger for a total of 6 kW charging power for fast charging of optional batteries.
- Integrated Battery Management System (BMS) monitors and protects the battery, increasing efficiency and safety and eliminating deep discharge.



Reduced emissions

- ✓ Reduction of more than 90% of CO₂ emissions*
- ✓ No exhaust fumes and minimal machine noise on the construction site
- ✓ Significantly improved electric motor efficiency as a result of high efficiency rate



Low operating costs

- ✓ Up to 85% lower energy costs compared to diesel machine
- ✓ Lower maintenance costs
- ✓ Same performance as a conventional machine in the same class



Comfortable for the operator

- ✓ Noise level reduced by nine decibels; operator perceives the machine as half as loud**
- ✓ Electric drive enables dynamic and powerful travel
- ✓ Charge anywhere: different charging cables/plugs available

Flexible charging options



1. Up to two chargers "onboard", no additional external charger required.



2. Open charging door, plug in type 2 connector on machine side.



3. Different charging cables/plugs available depending on battery size and need.

Flexibly selectable operator's platform: fixed operator's canopy, folding operator's canopy (EPS) and cab.



Enclosed cab: allows for year-round use.



* CO₂ emissions over the entire service life, directly and indirectly, i.e. including battery production and power generation (EU mix) compared with a conventional product in the same class.
 ** The decibel value gives the emission sound pressure level (LpA). This states the sound level of the equipment at the place of work directly assigned to it, for example in the cabin.



The appropriate operator's cab for every application option: operator's canopy, EPS (fold-down operator's canopy)

Compact dimensions and low weight allow for transport on a car trailer

Low front carriage for the WL25 and WL28 for the best possible view of the attachment and work area

Compact powerhouses: the wheel loaders WL20, WL25 and WL28.

	WL20	WL25	WL28
Bucket capacity (m ³)	0.19	0.30	0.42
Operating weight (kg)	2,000–2,150	2,380–2,550	2,800–3,300
Engine output (kW)	18.4	18.4	18.4/33.3*/40.1*
Tipping load of bucket, loading frame horizontal – angled machine (kg)	977/1,206*	1,144 / 1,703*	1,600–2,220

* Values of optional outfitting

Good maneuvering thanks to the small turning radius

Powerful hydraulics and tailored engine output for the best performance

Compact dimensions in width, height and length, ideal for confined spaces

Selectable operator's stand: operator's canopy, EPS (fold-down operator's canopy) or cabin

Ideal for heavy loads: WL28 easily moves a pallet of paving stones

Electric parking brake with Hill-hold-function ensures maximum safety and comfort (WL28)



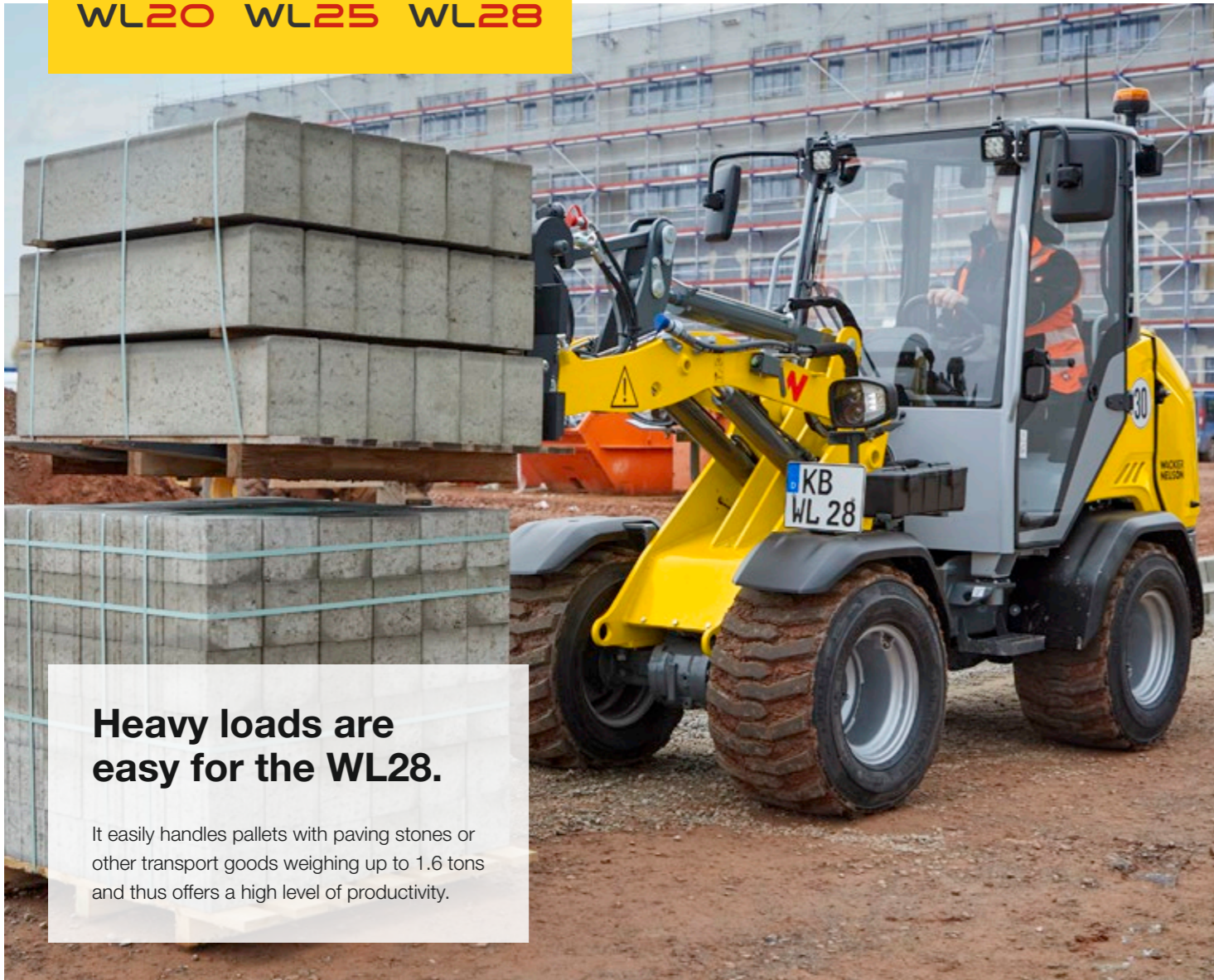
Optionally up to 30 km/h for quickly relocating the machine

Infinitely variable mudguards make it possible to use different tires

Easy transport on a car trailer thanks to the low weight

Flexible and universal in application due to the optimally tailored kinematics and very good weight distribution

Optimized design of the loading system for extra tipping load, stability, and an overview of the working area.



Heavy loads are easy for the WL28.

It easily handles pallets with paving stones or other transport goods weighing up to 1.6 tons and thus offers a high level of productivity.

Save time and transport costs: thanks to the compact dimensions and low weight, the machines can be transported easily by car trailer.



The design of the loading system ensures perfect all-round visibility. Both the cab and the operator's canopy offer an excellent view of the immediate work area.



Optimal service accesses.

All three wheel loaders are outfitted with a tiltable operator's cab or a fold-down cabin. This allows easy access to the engine, hydraulic system, and electrics. The engine hood can be opened widely, thereby allowing for optimal access.



Folded down quickly: the EPS (Easy Protection System) operator's canopy.



Thanks to different attachments, the three wheel loaders can be used for a wide variety of tasks.



Compact dimensions – ideal when it comes down to centimeters.



Optional comfort cab for safe and fatigue-free work.



Drive smarter with the WL28

The electronically controlled travel drive ensures extremely high driving comfort and increases the machine's thrust. In addition, various travel modes are available.

Standard:

- Auto-Mode: 100% familiar performance
- ECO mode: reduces consumption and noise

Optional:

- Attachment mode: constant performance with varying loads
- M-Drive mode: manual speed adjustment





Powerful hydraulics with many options (e.g. Highflow) for a wide range of attachments and applications

Despite the compact dimensions: powerful lifting and ripping forces with a powerful and well-tuned engine performance

Comfortably equipped cabin with optimal ergonomics and a clear overview

Multi-talented with comfort: the wheel loaders WL32, WL38, and WL52.

	WL32	WL38	WL52
Bucket capacity (m ³)	0.47	0.64	0.85
Operating weight (kg)	3,400	4,200–4,300	5,100
Engine output (kW)	45	45/55.4*	55.4
Tipping load of bucket, loading frame horizontal – angled machine (kg)	1,692/1,898*	2,494/3,113*	3,416

* Values of optional outfitting

Hydraulic joystick pilot control for fatigue-free working

Large lift height and high ripping forces due to the long load arm design with PZ kinematics (WL32, WL38), WL52 with powerful Z-kinematics and low front carriage for extra tipping load and a clear overview of the working area

Tilttable operator's cab allows for easy access to the engine, hydraulics and electrics – which saves time and money

Comfortable cabin outfitting for fatigue-free working and increased productivity

Good all-round visibility from operator's seat

A variety of hydraulic options allows for the use of different attachments

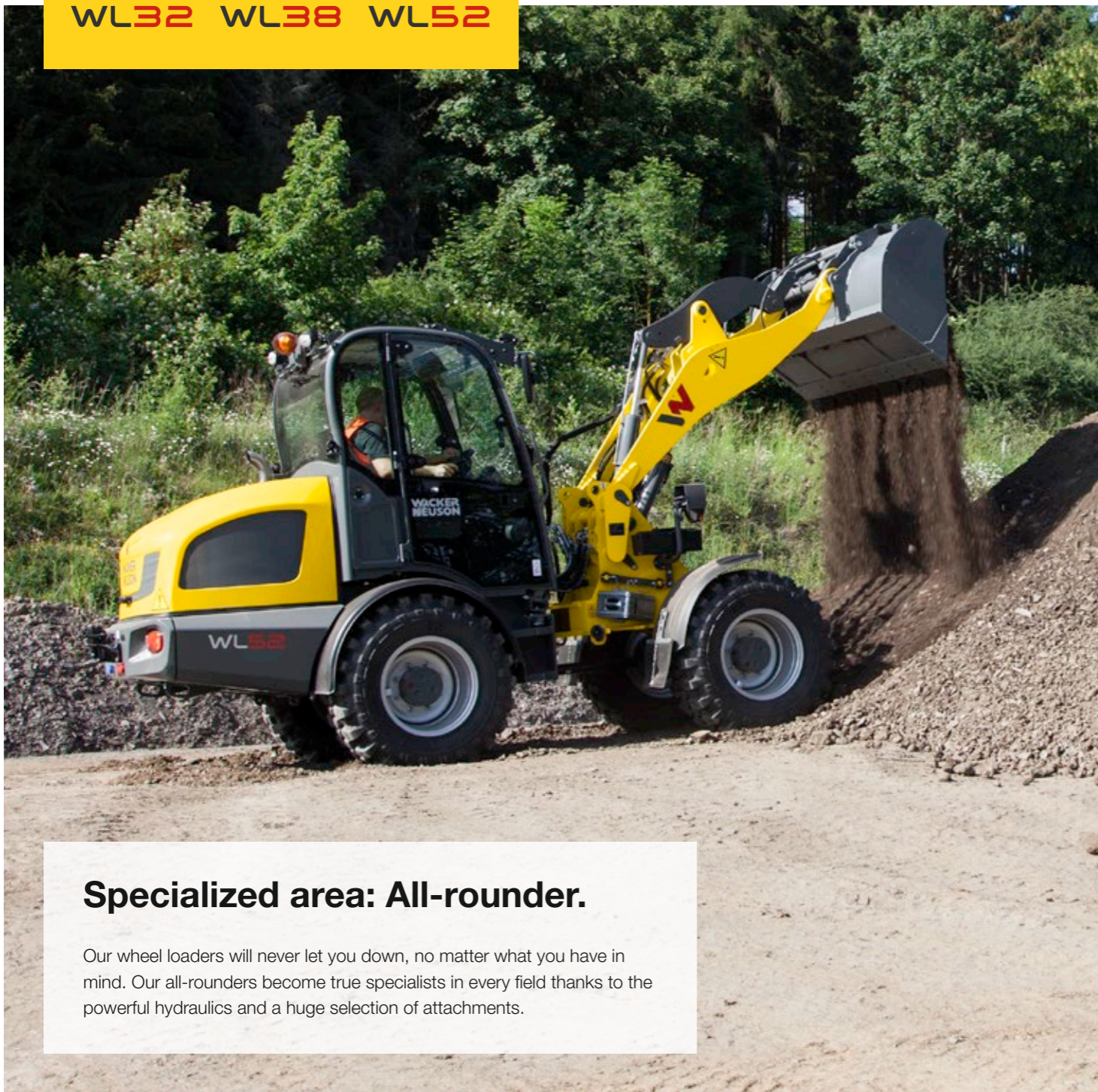


A reduced turning radius allows for good maneuvering

Ideal for foot paths:
WL32 already available from 1.2 m width

Powerful hydraulic system and optimally matched engine output

Very high ripping forces due to the large-sized tipping cylinders



Specialized area: All-rounder.

Our wheel loaders will never let you down, no matter what you have in mind. Our all-rounders become true specialists in every field thanks to the powerful hydraulics and a huge selection of attachments.

Comfortably equipped cabin.

Comfort and a high degree of ergonomics in the cabin allow the operator to work productively and fatigue-free for hours. For example, the spacious cabins are ideally damped against vibrations and the comfort seat is additionally air-cushioned. The steering wheel, seat and operator's controls can be

individually adapted to the operator's size. The machine and additional functions are controlled via a joystick of the latest generation. In this way, the operator always has everything in hand.



Comfortable work: adjustable steering wheel and air-cushioned comfort seat (optional).

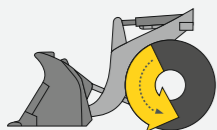


Operator-friendly and multi-functional: the innovative joystick with ergonomically-arranged, illuminated touch controls.

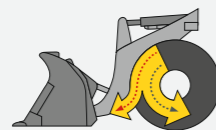


Adjustable joystick console on the operator's seat that swings along.

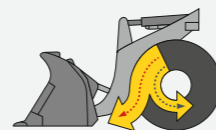
Inch brake pedal: engine output where it is needed.



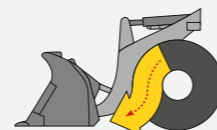
No pressure on the inch-brake pedal: full power for the travel drive system.



Slightly depressed inch-brake pedal: speed is reduced, more power to the work hydraulics.



Further depressed inch-brake pedal: the speed is reduced further, even more power to the work hydraulics.



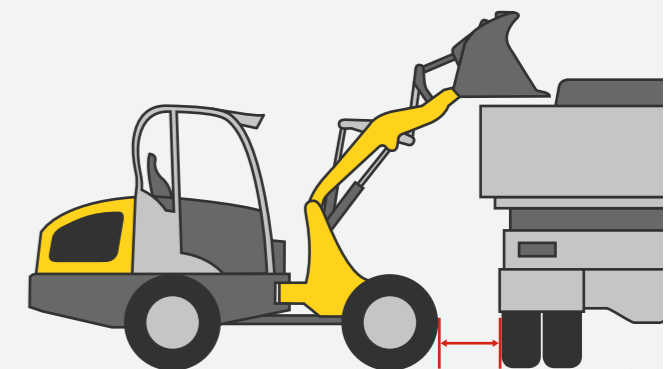
Fully depressed inch-brake pedal: the wheel loader stands still, full power to the work hydraulics.



Full power for the hydraulics and reduced travel speed at the same time:

The advantages are obvious: less wear of the service brake and optimal power distribution of the engine output. Stalling of the engine is not possible.

Effortless loading, even with high sides, thanks to the load arm with a large lift height and reach.





Sturdy and cost-efficient:
ideal entry-level model
without sacrificing power and
performance

Large selection of operator's
stations: different operator's
canopies and (comfort) cabins

Many individual options for
standard equipment can be
selected

Proven all-rounder: the wheel loader WL34, WL44, WL54.

	WL34	WL44	WL54
Bucket capacity (m³)	0.62	0.80	0.90
Operating weight (kg)	3,900	4,600	5,800
Engine output (kW)	45/55.4*	45/55.4*	55.4
Tipping load of bucket, loading frame horizontal – angled machine (kg)	2,443/2,539*	2,736/2,845*	2,761/3,045*

* Values of optional outfitting

Selectable operator stands (varies by model, see p. 47): operator's canopy (low/high), 2-door cabin, 1-door comfort cabin

Comfort cab
for fatigue-free work

Operator's canopy (low/high)
also allows for low passages and thus a large range of applications

The optional air-conditioning system provides for a pleasant working environment, even in warm temperatures

Large lift height due to the long loading system

Powerful hydraulics with many options, such as Highflow

Easy service access for fast and efficient maintenance

Large selection of tires for the most diverse applications

Impressive performance dynamics – for the WL44, different engine outputs can be selected depending on the application

Numerous attachments for versatile application

The extremely heavy-duty design ensures for the machine's longevity



Everything that productive work requires.

You don't have to do without anything, even with our entry-level models – especially not when it comes to performance. The sturdy and sophisticated technology of our wheel loaders has been time-tested and proven in many applications. This makes them into particularly reliable performance machines on any construction site – a cost-benefit calculation that works.

Two lift cylinders.

For even more stability of the loader system, all wheel loaders from Wacker Neuson are equipped with two lift cylinders. In this way, the hydraulic power is optimally distributed to the load arm.



Z-kinematics.

The WL44 and WL54 are outfitted with Z-kinematics. This allows higher break out forces in the tilting movement - for powerful work and sufficient power reserves in every situation.



Comfort cab.

The 1-door comfort cab is spring-mounted at four points. In this way, impacts are optimally absorbed. From the entry on the left to the fully glazed vent window on the right, the cabin offers an excellent view of the attachment and the entire working area.

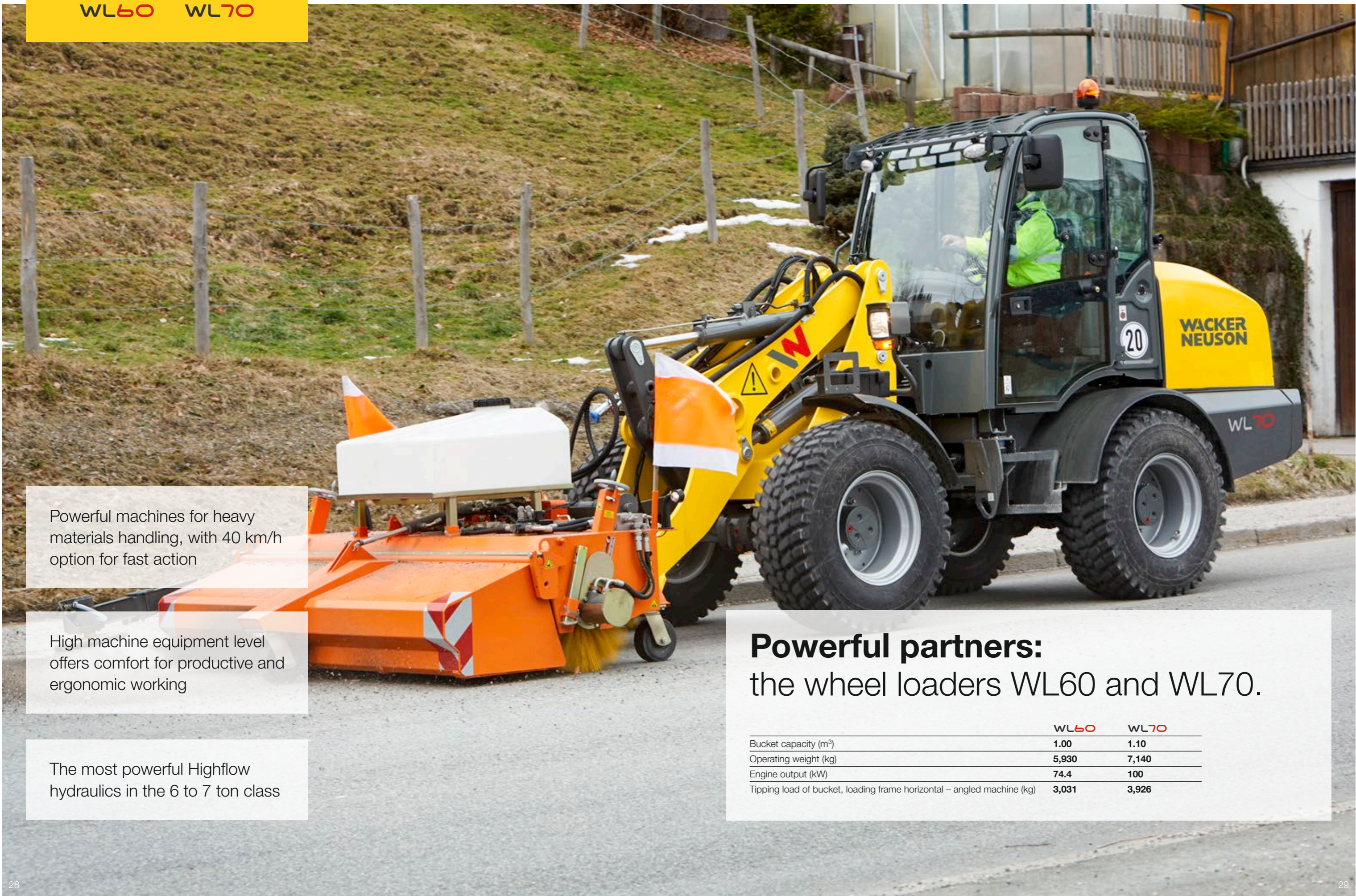
Ergonomics.

The seat and armrests can be individually adjusted. This way even large operators find the optimal operating position so they can work fatigue-free for longer periods of time.

Uncomplicated maintenance.

The removable seat, the wide-opening engine hood as well as various maintenance covers make all service accesses easy to reach. This saves time and money in maintenance.





Powerful machines for heavy materials handling, with 40 km/h option for fast action

High machine equipment level offers comfort for productive and ergonomic working

The most powerful Highflow hydraulics in the 6 to 7 ton class

Powerful partners: the wheel loaders WL60 and WL70.

	WL60	WL70
Bucket capacity (m³)	1.00	1.10
Operating weight (kg)	5,930	7,140
Engine output (kW)	74.4	100
Tipping load of bucket, loading frame horizontal – angled machine (kg)	3,031	3,926

Load-sensing performance hydraulics

with 150 l/min flow for more operating comfort and less fuel consumption

Optional flow-sharing

increases productivity and allows for the simultaneous operation of several functions

Various rear hydraulic options

for additional rear attachments, such as a salt spreader in winter application

If desired up to two electric

functions of attachments controllable via joystick

Quick, favorably priced maintenance

due to the tiltable cabin



Jog dial: comfortable control of the oil volume for sensitive working with attachments

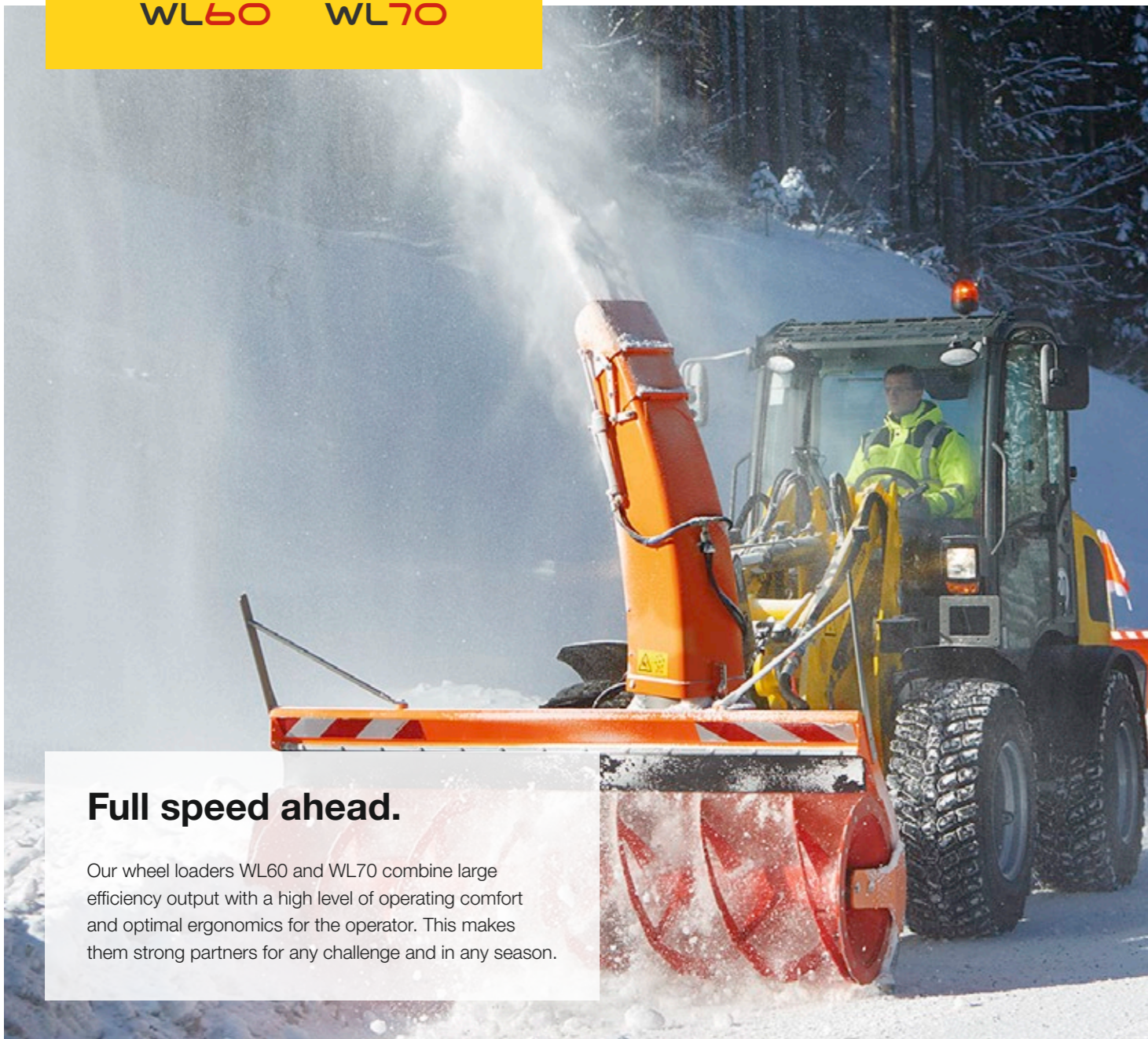
Trailer operation with up to 8-ton trailer load

possible with different approvals (attention: observe country provisions)

Sturdy load arm design

with the largest lift height in its performance range

Automatic speed-dependent load arm damping for comfortable road travel



Full speed ahead.

Our wheel loaders WL60 and WL70 combine large efficiency output with a high level of operating comfort and optimal ergonomics for the operator. This makes them strong partners for any challenge and in any season.

Joystick and jog dial.

Perfect control of machine and functions via a joystick of the latest generation. The innovative joystick with ergonomically-arranged, illuminated touch controls creates operator friendliness and multi-functionality.

If necessary, the flow rate of the hydraulic oil can be manually set using the "jog dial" control element. This is advantageous if the machine drives a hydraulic attachment, which does not require the full hydraulic performance of the machine. The operator can thus work with the machine and attachment very sensitively and in a resource-conserving way.



Ventilation as required.

The cabs feature large, wide-opening doors on both sides. The upper window can fold up completely and be locked. A gap ventilation is also possible.



Comfortable working environment.

The working environment is excellent, thanks to an efficiently working heating and ventilation system with a fan, fresh air filter and well-placed air nozzles. In warm temperatures, an air-conditioning system is recommended.



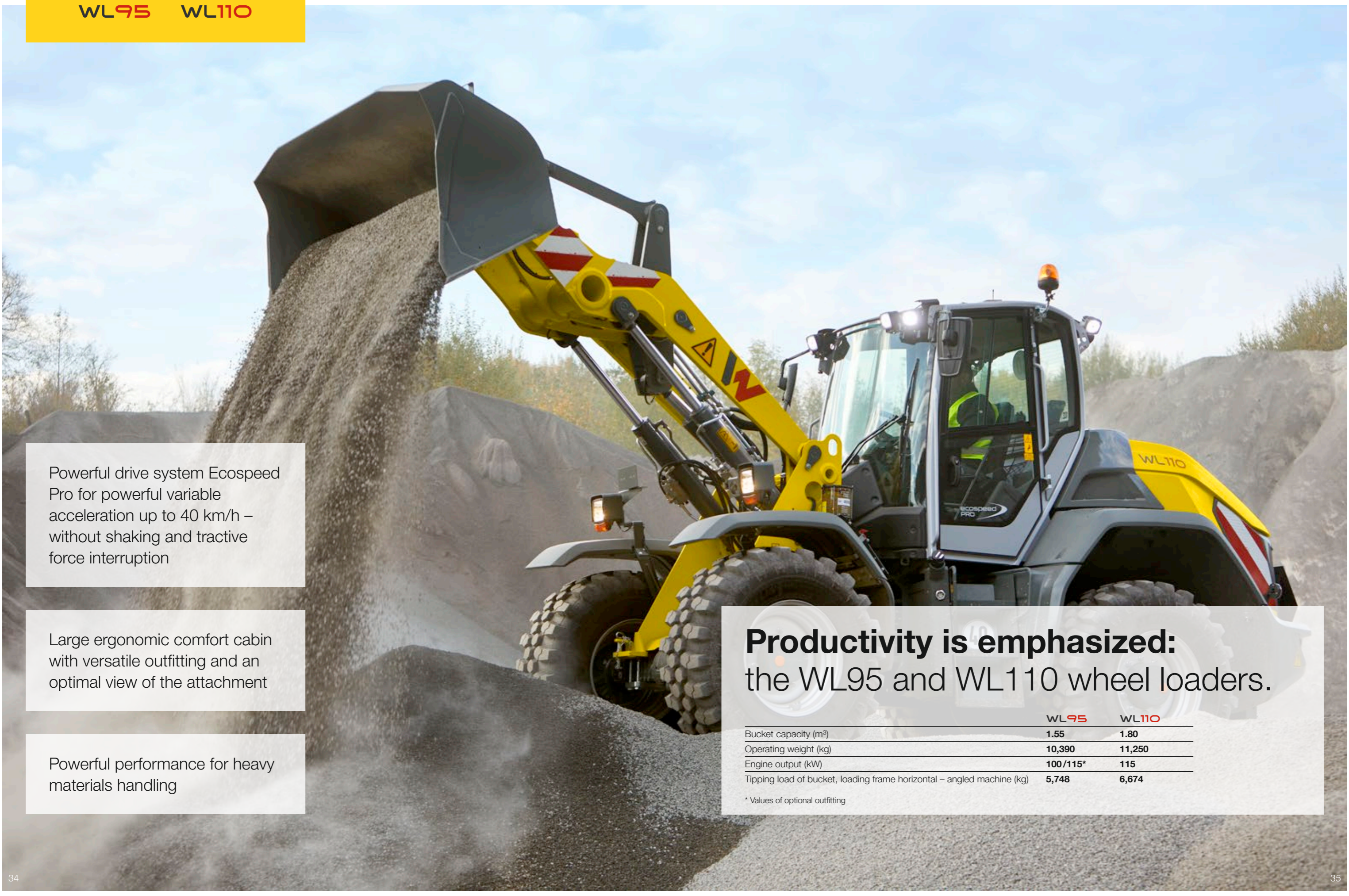
High level of stability – thanks to the optimal weight distribution.



Easy entry.

With a few steps, you can get into the machine's cabin comfortably. The large designed and slip-proof entry steps make this possible.





Powerful drive system Ecospeed Pro for powerful variable acceleration up to 40 km/h – without shaking and tractive force interruption

Large ergonomic comfort cabin with versatile outfitting and an optimal view of the attachment

Powerful performance for heavy materials handling

Productivity is emphasized:
the WL95 and WL110 wheel loaders.

	WL95	WL110
Bucket capacity (m ³)	1.55	1.80
Operating weight (kg)	10,390	11,250
Engine output (kW)	100/115*	115
Tipping load of bucket, loading frame horizontal – angled machine (kg)	5,748	6,674

* Values of optional outfitting

Optimal service accesses
thanks to the wide-opening engine hood and removable mudguards

Extensive standard equipment
such as a large LCD display, rear-view camera, automatic air conditioning

Powerful load-sensing hydraulics
with 150 l/min (optional 180 l/min) for faster work cycles

The power output sets new standards for tipping load, thrusting power and lift capacity

Hydraulic reversing fan
reverses the air flow at the push of a button and thus cleans the radiator

Automatic bucket return saves the tool position at the touch of a push button and recalls it again during any new loading process – for maximum precision and speed, for example when stacking or filling

Individual configuration of the engine, drive, operator's stand and hydraulics

Trailer operation up to 18 tons for all common coupling systems

Excellent all-round visibility thanks to the fully glazed cabin and plenty of headroom and freedom of movement

Various drive modes can be selected

Digging bucket with 1.8 m³ for large material handling

Powerful Load-Sensing-Hydraulics of 180 l/min

Powerful engine with 156 hp in standard equipment



Good all-round visibility and an ergonomic working area.

Plenty of legroom, clearly arranged switches, comfortable operator's seat and optimal view of the attachment. A working area that motivates and fully supports the operator. The console with the multi-functional joystick "jog dial," electronic manual throttle and inching were of course realized to be co-sprung with the seat to allow for comfortable driving and working.



With a digital 7"-Display, keep everything in view:

In addition to standard displays such as temperature, tank filling, or operating hours, active functions, such as active electrical functions, the continuous operation of the 3rd control circuit, or the activated differential lock are also displayed in the cockpit.

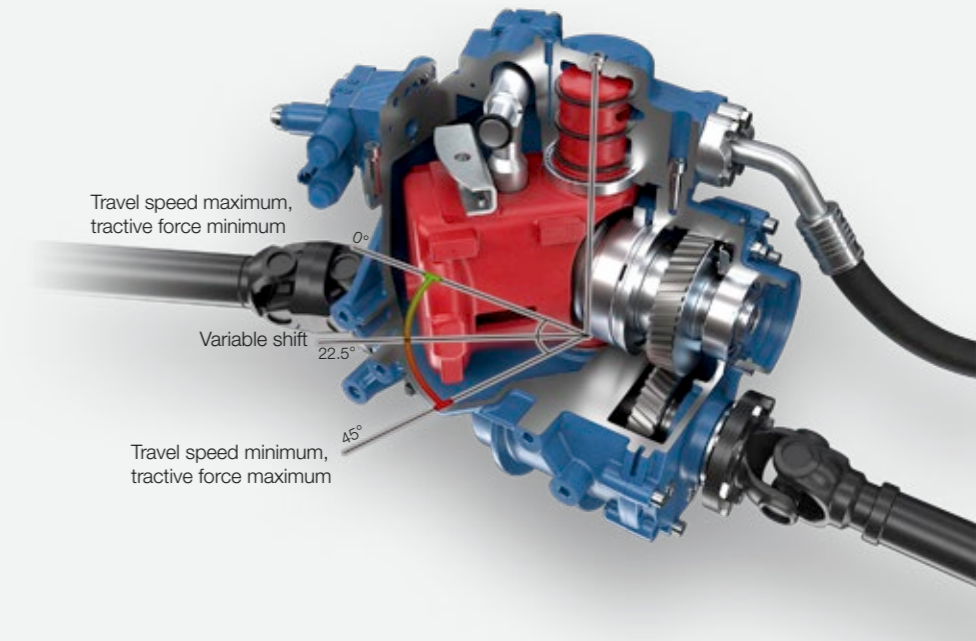


Hydraulic oil volume adjustment easily via "jog dial:"

If an attachment does not require the full hydraulic performance, the flow volume can be reduced manually. In this way, the operator can work sensitively with the machine and attachment while saving resources.

New powerful transmission.

The ecospeedPRO is a variable hydrostatic transmission, which achieves higher tractive forces and travel speeds than previously developed solutions, all while retaining the advantages of previous drives with respect to compactness, energy efficiency, and operator comfort. ecospeedPRO allows for speeds of up to 40 km/h without shifting. This results in a comfortable driving style, since no tractive force interruptions occur nor can shifting jerks be felt.



Optimal service accesses:

The WL95 and WL110 offer easy-to-access maintenance flaps and the mudguards can be removed. This allows easy access to the engine, hydraulic system, and electronics. This greatly facilitates the inspection and maintenance of the machine. The engine hood can be opened widely, thereby allowing for optimal access.



Rear articulated joint and oscillating axle:

Tight curves, small slopes – every construction site is different. In order to bring the transported material safely to the destination, the WL95 and the WL110 are equipped with an articulated joint and an oscillating axle in the rear. This ensures the optimum maneuverability and traction in any situation. At 40°, the steering angle is generous, the turning circle over tires is 4.90 m and the inner radius is 2.45 m.



Trailer operation up to 18 tons:

WL95 and WL110 have a self-recovery coupling as standard. In addition, the following coupling possibilities are available: automatic ball hitch, K50 ball hitch (car trailer), Auto Hitch, Piton Fix, as well as CUNA D3. To safely move trailer loads, there is both a two-line pneumatic brake as well as a hydraulic trailer brake.

Attachments.

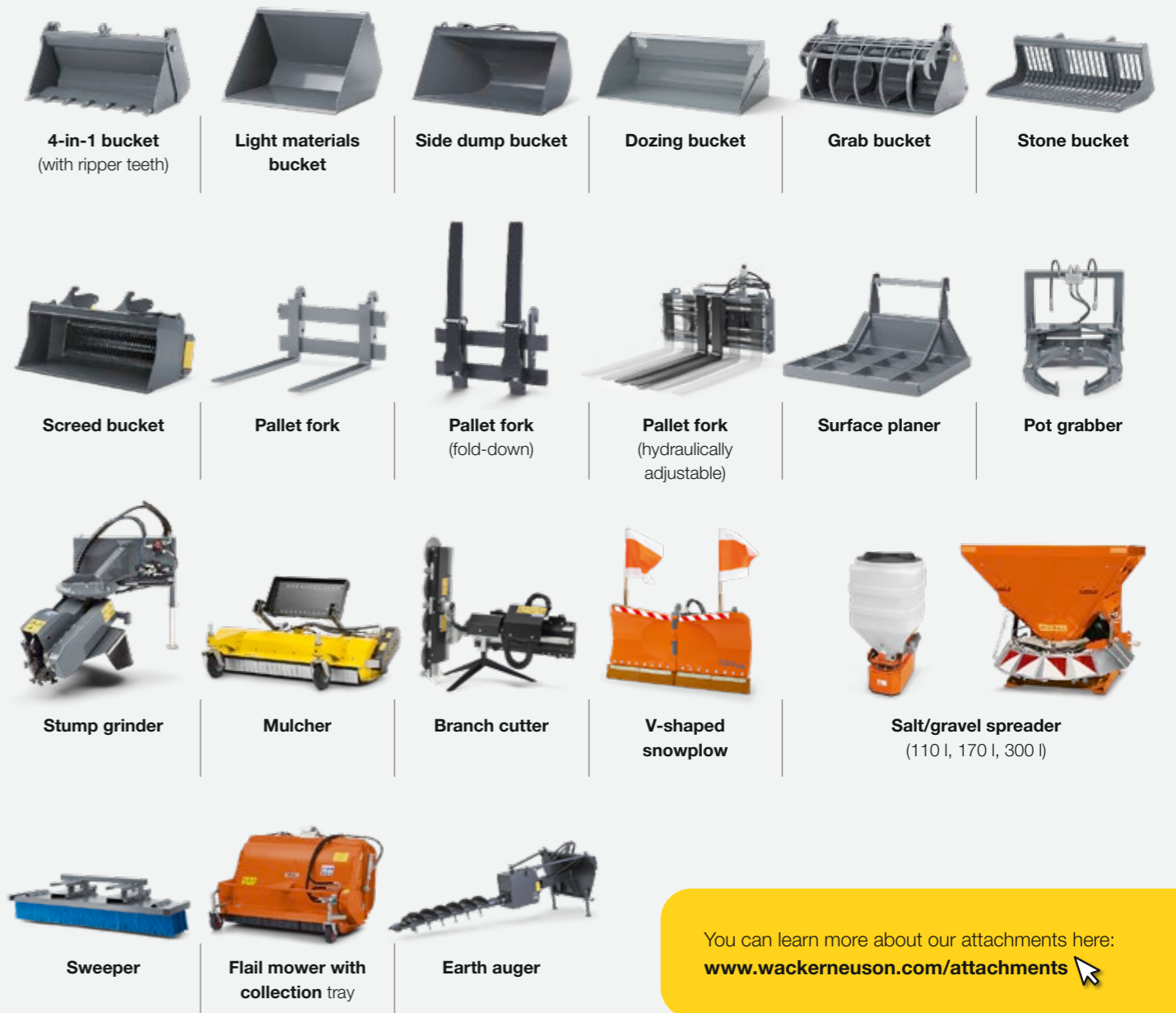


The right attachment for every machine.

The tasks for wheel loaders are varied and so are the attachments from Wacker Neuson. With our comprehensive and sophisticated product range, you will make a multi-functional machine out of any model. And through the hydraulic quick hitch system, the attachments can easily be replaced from your seat.

The exact specifications and availabilities of attachments differ depending on the model and country. Your Wacker Neuson partner is happy to help you.

Product range for wheel loaders (selection).



You can learn more about our attachments here:
www.wackerneuson.com/attachments

Winter road maintenance made easy: with the right snow blower.



Reliable even for heavy loads: the width-adjustable pallet fork.

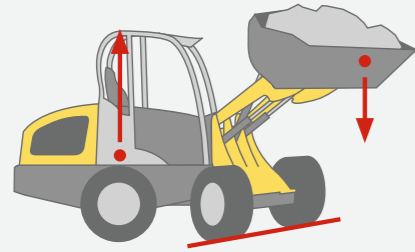


Hydraulic equipment change directly from the operator's seat.



For all wheel loaders from Wacker Neuson many other couplings are possible in addition to the company's own couplings. Thus, you can use different attachments. You can find more information at your Wacker Neuson distributor.

Tipping load briefly explained.



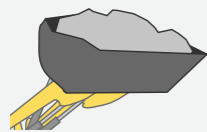
The tipping load shows the maximum load weight of a machine, including attachment. If the value is reached, the rear wheels will lose contact with the ground.



Wacker Neuson measures the tipping load according to the standard ISO 14397 - EN474-3. The following values are specified here:

- Tipping load with bucket – horizontal loading frame, machine straight
- Tipping load with bucket – horizontal loading frame, machine angled
- Tipping load with pallet fork – horizontal loading frame, machine straight
- Tipping load with pallet fork – horizontal loading frame, machine angled

Attention: The tipping load changes due to the equipment of the machine (e.g. rear weight, cab, or operator's canopy, etc.) and due to different attachments (e.g. buckets with different dead weights).



The maximum possible bucket capacity is determined by the tipping load and the payload:

$$\text{Payload} = \frac{\text{Tipping load angled}}{2}$$

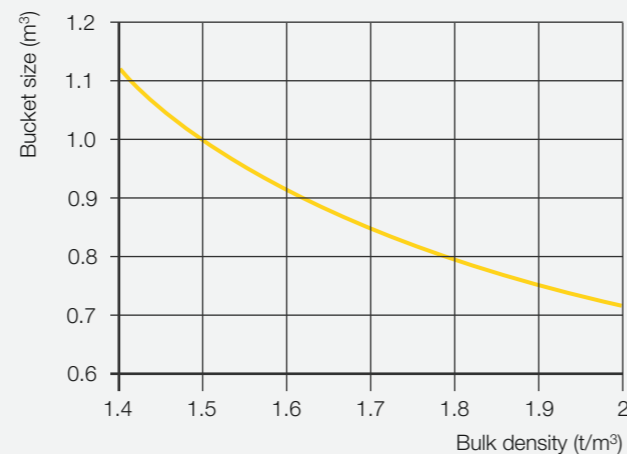
$$\text{Bucket capacity} = \frac{\text{Payload (t)}}{\text{spec. material weight (t/m}^3\text{)}}$$

Bulk material and bucket selection.

Each bulk material has a different density and thus a different weight for the same quantity. The following tables give an overview of different bulk materials and the corresponding bucket selection.

BULK MATERIAL	BULK DENSITY t/m ³
Moist soil	2.10
Dry soil	1.50
Lime	1.60
Mortar	2.20
Dry sand	1.65
Moist sand	2.00
Dry gravel	2.00
Moist gravel	2.00
Waste paper	1.10
Household trash	0.70
Loose snow	0.13
Moist snow	0.65
Logs	0.80
Wood chips	0.35
Wood pellets	0.65
Granite	1.80
Sandstone	2.40
Slate	2.20
Bauxite	1.40
Broken plaster	1.80
Coke	0.50
Broken glass waste	1.40
Whole glass waste	1.00
Compost	1.00
Bulky waste	1.00

Bucket selection table



Tire treads.

The right wheel loader tires play an important role in specific applications. Everything runs perfectly if the tires are optimally matched to the ground surface and application area. Seven treads are available for you to choose from.

The exact specifications and availabilities of tires differ depending on the model and country. Your Wacker Neuson partner is happy to help you.

RP tread (turf)

- Gentle driving on the ground due to the large contact surface
- For use on lawns and green areas

AS tread (tractor)

- Tapered lamellas
- For slippery and very dirty surfaces
- For earthworks, green areas (and loamy ground)

EM tread (earth moving)

- Parallel-running lamellas
- Large contact surface and therefore good thrusting force transmission and high running smoothness on the street
- For earthworks, sand, gravel, crushed stone, asphalt



MPT tread (industry)

- Very broad application spectrum
- Good traction in uneven ground conditions
- Allows for quick road crossings
- For asphalt, gravel, crushed stone, industry

Multi-use tread

- For varied year-round use and various climate conditions
- Good traction on loose surfaces in the summer
- Good stability on snow and slippery driving surfaces during the winter
- For ice/snow, asphalt, industry, municipalities

SureTrax Tread

- Large contact area
- High load-bearing capacity
- Ideal for paved and other hard surfaces
- For asphalt, paving stones, hard and firm ground

Bibload-Tread

- High level of running smoothness and long service life due to the large contact surface with the ground
- Good traction due to the offset tread blocks
- High level of wear resistance
- For asphalt, industry, and firm ground conditions

Standard equipment & options

WHEEL LOADERS

	WL20B	WL20	WL25	WL28	WL32	WL34	WL38	WL44	WLS2	WLS4	WL60	WL70	WL95	WL110
ENGINE														
Perkins 403J-11 18.4 kW	-	●	-	-	-	-	-	-	-	-	-	-	-	-
Perkins 403J-17T 18.4 kW	-	-	●	-	-	-	-	-	-	-	-	-	-	-
Yanmar 3TNV80FT 18.4 kW	-	-	-	●	-	-	-	-	-	-	-	-	-	-
Yanmar 3TNV86CHT 33.3/40.1 kW DOC/DPF	-	-	-	○	-	-	-	-	-	-	-	-	-	-
404 J-E22T 45 kW DOC/DPF	-	-	-	-	●	-	-	-	-	-	-	-	-	-
Deutz TD 2.9 L4 45 kW S5 DOC/DPF	-	-	-	-	-	●	●	●	-	-	-	-	-	-
Deutz TCD 2.9 L4 55.4 kW S5 DOC/DPF	-	-	-	-	-	○	○	○	●	●	-	-	-	-
Perkins 904J-E36TA 74.4 kW DOC/SCR	-	-	-	-	-	-	-	-	-	-	●	-	-	-
Perkins 904J-E36TA 100 kW DOC/SCR	-	-	-	-	-	-	-	-	-	-	-	●	-	-
Deutz TCD 3.6 S5 100 kW DOC/DPF/SCR	-	-	-	-	-	-	-	-	-	-	-	-	●	-
Deutz TCD 4.1 S5 115 kW DOC/DPF/SCR	-	-	-	-	-	-	-	-	-	-	-	-	○	●
Battery/electric motor drive system	●	-	-	-	-	-	-	-	-	-	-	-	-	-
LIGHTING														
Rotating beacon	○	○	○	○	○	○	○	○	○	○	○	○	○	○
Work lights, 2 in front, 2 in rear (WL20/WL20e: 2 front, 1 rear; WL95: 4 front, 2 rear)	●	●	●	●	●	●	●	●	●	●	●	●	●	●
Work lights LED, 2 front, 2 rear (WL20/WL20e: 2 front, 1 rear; WL95: 4 front, 2 rear side, 2 rear)	○	○	○	○	○	○	○	○	○	○	○	○	○	○
ELECTRONICS														
Front plug receptacle, triple-pole	-	○	○	○	-	○	-	○	-	○	-	-	-	-
Front plug receptacle, 7-pole	-	○	-	-	○	-	○	○	○	○	○	○	-	-
Front plug receptacle, 13-pole	○	-	-	-	-	-	-	-	-	-	-	-	○	○
Rear plug receptacle, 7-pole	○	○	○	○	○	-	○	○	○	○	○	○	○	○
Front plug receptacle, with joystick control	-	-	-	-	○	-	○	○	○	○	○	○	○	○
Rear outlet, Triple-pole	-	-	-	-	○	○	○	-	○	-	○	○	○	○
FRONT AREA HYDRAULICS														
Depressurized front return flow	○	○	○	○	○	○	○	○	○	○	○	○	○	○
3. control circuit, front DN10	●	●	●	-	-	-	-	-	-	-	-	-	-	-
3. control circuit, front DN12	-	-	○	●	●	●	●	●	●	●	●	●	●	●
3. comfort control circuit	○	○	○	○	-	○	-	○	-	○	-	-	-	-
4. comfort control circuit	-	○	○	○	-	-	-	○	-	○	-	-	-	-
3. control circuit, electrically proportional	-	-	-	-	●	○	●	○	●	○	●	●	●	●
4. control circuit, parallel/LS	-	-	-	-	●	-	●	○	●	○	●	○	○	○
4. proportional-controlled control circuit	-	-	-	-	○	-	○	○	○	○	○	○	○	○
Work hydraulics of large pump (depending on model, between 58.5 l and 103 l)	-	-	-	○	○	○	○	○	○	○	-	-	-	-
Highflow single action	-	○	-	-	○	-	○	○	○	○	-	-	-	-
Highflow double action 150 l: Load-sensing	-	-	-	-	-	-	-	-	-	-	○	○	○	○
Highflow double action 180 l: Load-sensing	-	-	-	-	-	-	-	-	-	-	-	○	○	○
3./4. circuit flow sharing	-	-	-	-	-	-	-	-	-	-	●	●	-	-

WHEEL LOADERS

	WL20B	WL20	WL25	WL28	WL32	WL34	WL38	WL44	WLS2	WLS4	WL60	WL70	WL95	WL110
REAR AREA HYDRAULICS														
Rear hydraulic connection, single-acting	-	○	○	○	○	○	-	○	-	○	-	-	○	○
Rear hydraulic connection, double-acting	○	○	-	○	○	-	○	-	○	-	○	○	○	○
Rear hydraulic connection, electronic valve	-	-	○	-	-	-	-	-	-	-	-	-	-	-
Unpressurized return in rear	-	-	○	○	○	-	○	○	○	○	○	○	○	○
Rear hydraulic connection, additional, single-acting	-	-	-	-	○	-	○	○	○	○	○	○	○	○
Rear hydraulic connection, additional, dual-acting	-	-	-	○	○	-	○	-	○	-	○	○	○	○
OPERATOR'S STAND														
Operator's stand tiltable	-	●	●	●	●	-	●	-	●	-	●	●	●**	●**
Fold-down operator's canopy (EPS)	○	○	○	○	-	-	-	-	-	-	-	-	-	-
Operator's canopy, low	-	-	-	-	-	○	-	○	-	-	-	-	-	-
Operator's canopy, high	●	●	●	●	●	●	-	●	-	●	-	-	-	-
Low cabin	-	-	-	-	-	○	○	-	○	-	-	-	-	-
High cabin	○	○	○	○	○	○	-	○	-	○	-	-	-	-
High cabin comfort	-	-	-	-	-	-	●	-	●	-	●	●	●	●
High cabin comfort, single-door	-	-	-	-	-	-	-	○	-	○	-	-	-	-
OTHER														
Air-conditioning system	-	-	-	○	○	-	○	○	○	○	○	○	○	○
Load arm damping	-	-	○	○	○	○	○	○	○	○	○	○	○	○
Central lubrication system	-	○	○	○	○	○	○	○	○	○	○	○	○	○
Manual throttle	-	-	-	○	○	○	○	○	○	○	○	○	○	○
Hand inching	-	-	○	○	○	○	○	○	○	○	○	○	○	○
Engine preheating 230 V	-	○	○	○	○	○	○	○	○	○	○	○	○	○
Low front carriage	-	-	○	●	-	-	-	●	●	-	-	-	-	-
Automatic bucket return	-	-	-	-	-	-	-	-	-	-	-	-	○	○
ecospeedPRO drive system	-	-	-	-	-	-	-	-	-	-	-	-	○	○
Electronically regulated drive system with various drive modes	-	-	-	●	-	-	-	-	-	-	-	-	-	-
Reverse fan	-	-	-	-	-	-	-	-	-	-	-	-	●	●
Radio	○	○	○	○	○	○	○	○	○	○	○	○	○	○

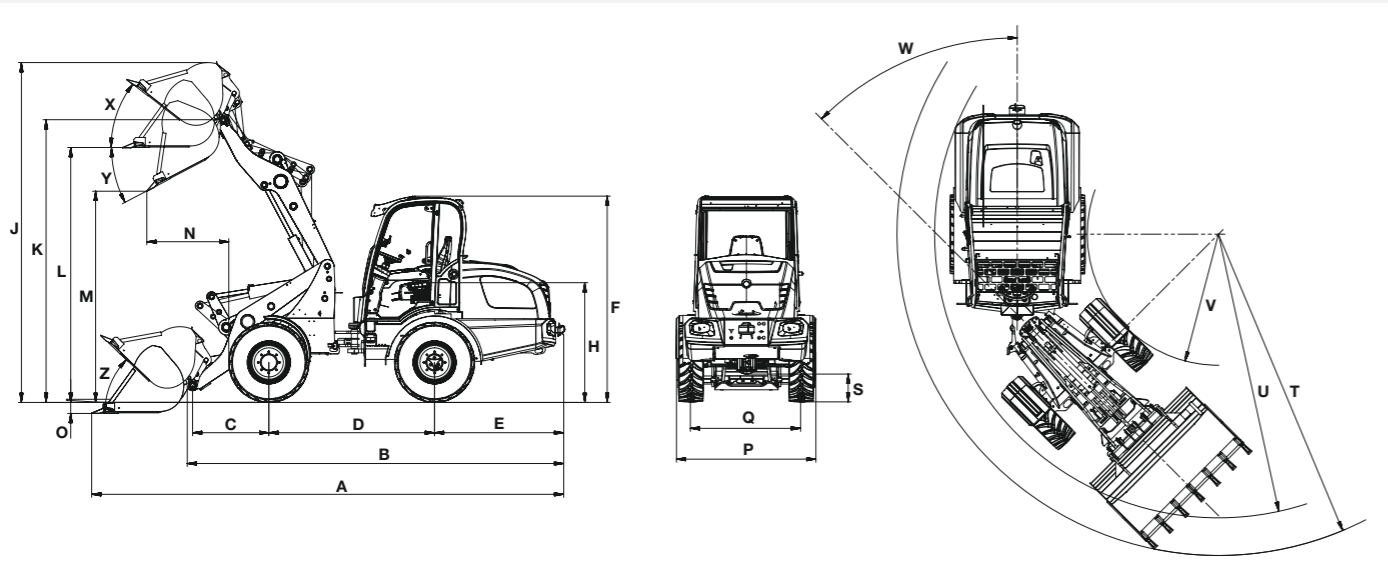
● Standard ○ Option - Not available
 ** Please contact Wacker Neuson for other countries.
 ** Cabin can only be tilted in workshop

Dimensions

WHEEL LOADER

			WL20e	WL20	WL25	WL28	WL32	WL34	WL38	WL44	WL52	WL54	WL60	WL70	WL95	WL110
DIMENSIONS		UNIT														
Standard tires		-	27X10.5-15 Deestone D304 ETO	27x10.5-15 EM ET-5	10-16.5 EM ETO	12-16.5 EM ETO	10-16.5 EM ETO	12.0/75-18 MPT ET-30	15/55-18 EM ETO	12.5-18 MPT ET-50	405/70-18EM ETO	12.5-18 MPT ETO	405/70-18 EM ETO	405/70-18 EM ETO front water filling	500 / 70 R24 Michelin BIBLOAD ET 40	500 / 70 R24 Michelin BIBLOAD ET 40
Standard bucket			Digging bucket 1,150 mm, 0.19 m ³	Digging bucket 1,150 mm, 0.19 m ³	Digging bucket 1,250 mm, 0.27 m ³	Digging bucket 1,350 mm, 0.42 m ³	Digging bucket 1,400 mm, 0.45 m ³	Digging bucket 1,600 mm, 0.6 m ³	Digging bucket 1,650 mm, 0.6 m ³	Digging bucket 1,900 mm, 0.80 m ³	Digging bucket 2,000 mm, 0.85 m ³	Digging bucket 2,000 mm, 1.0 m ³	Digging bucket 1,900 mm, 1.0 m ³	Digging bucket 2,100 mm, 1.1 m ³	Digging bucket 2,500 mm, 1.55 m ³	Digging bucket 2,500 mm, 1.80 m ³
A	Overall length	mm	3,697	3,721	4,087	4,520	4,755	5,010	5,138	5,420	5,420	5,760	5,898	5,898	6,500	6,500
B	Total length without bucket	mm	3,061	3,063	3,302	3,710	4,022	4,260	4,281	4,760	4,760	4,828	4,780	4,780	5,610	5,610
C	Axle center to bucket pivot point	mm	509	508	532	670	675	675	675	1,040	1,040	991	991	991	1,200	1,200
D	Wheel base	mm	1,468	1,468	1,612	1,760	1,952	2,045	2,045	2,110	2,110	2,150	2,150	2,150	2,660	2,660
E	Rear overhang	mm	971	975	1,045	1,230	1,290	1,430	1,516	1,530	1,530	1,531	1,676	1,676	1,520	1,520
F	Height (min./max.)	mm	1,939-2,336	1,880-2,302'	1,877 - 2,291'	2,340-2,395	2,336/2,348'	2,220/2,420*	2,371/2,548*	2,332/2,470 /2,528'	2,498/2,675'	2,495/2,532'	2,693	2,693	3,060	3,060
H	Seat height	mm	1,292	1,225	1,259	1,350	1,354	1,270	1,204	1,470	1,590	1,495	1,609	1,609	1,940	1,940
J	Total working height	mm	3,248	3,274	3,582	3,210	3,715	3,930	4,007	3,890	3,930	4,561	4,409	4,536	4,780	4,780
K	Max. height of the bucket swivel point	mm	2,710	2,693	2,862	2,560	3,208	3,270	3,251	3,200	3,240	3,671	3,686	3,686	3,820	3,820
L	Load-over height	mm	2,436	2,424	2,573	2,240	2,954	2,970	2,892	2,940	2,980	3,335	3,375	3,375	3,550	3,550
M	Dumping height	mm	2,017	2,011	2,047	1,700	2,425	2,460	2,379	2,430	2,470	2,864	2,841	2,840	2,860	2,860
N	Reach with M	mm	296	350	337	520	252	344	155	665	625	875	799	799	950	950
O	Scraping depth	mm	83	94	50	130	50	43	120	136	96	114	74	73.5	136	136
P	Overall width	mm	1,052	1,076	1,210	1,250	1,414	1,550	1,570	1,830	1,810	1,750	1,829	1,829	2,390	2,390
Q	Track width	mm	804	810	940	940	1,148	1,260	1,200	1,500	1,400	1,432	1,422	1,422	1,820	1,820
S	Ground clearance	mm	219	207	250	270	275	320	312	367	370	352	375	375	500	500
T	Maximum outward radius	mm	2,645	2,681	2,912	3,200	3,534	3,610	3,652	4,270	4,240	4,242	4,072	4,341	5,370	5,370
U	Radius on the outer edge	mm	2,379	2,356	2,590	2,800	3,171	3,350	3,317	3,870	3,850	3,785	3,686	3,686	4,900	4,900
V	Inside radius	mm	1,205	1,219	1,330	1,510	1,731	1,680	1,640	1,990	1,910	1,931	1,666	1,666	2,450	2,450
W	Articulation angle	degrees	45	45	45	45	45	45	45	40	40	42	45	45	40	40
X	Rollback angle at max. lift height	degrees	50	50	48	47	49	49	43	71	71	44	33	33	56	56
Y	Max. angle for bucket emptying	degrees	40	38	42	41	44	43	42	45	45	28	33	33	45	45
Z	Rollback angle on the ground	degrees	49	48	46	50	39	43	41	43	43	38	39	39	45	45

* Depending on operator's cab (cab, cab low / high, operator's canopy fixed, operator's canopy low / high, operator's canopy fold-down)



Technical data

WHEEL LOADER

		WL20e	WL20	WL25	WL28	WL32	WL34	WL38	WL44	WL52	WL54	WL60	WL70	WL95	WL110
ENGINE		UNIT													
Manufacturer	–	–	Perkins	Perkins	Yanmar	Perkins	Deutz	Deutz	Deutz	Deutz	Deutz	Perkins	Perkins	Deutz	Deutz
Max. engine output (optional)	kW	–	18.4	18.4	18.4 (33.3/40.1)	45	45 (55.4)	45 (55.4)	45 (55.4)	55.4	55.4	74.4	100	100 (115)	115
Max. engine output (optional)	HP	–	25	25	25 (45.3/54.5)	61.2	61 (75)	61 (75)	61 (75)	75	75	101.2	136	136 (156)	156
at max. rpm (optional)	rpm	–	2,800	2,800	2,600	2,600	2,300	2,300	2,300	2,300	2,300	2,200	2,200	2,300	2,300
Displacement (optional)	cm³	–	1,131	1,662	1,226 (1,568)	2,216	2,900	2,900	2,900	2,900	2,900	3,621	3,621	3,621 (4,038)	4,038
WEIGHTS		UNIT													
Operating weight FSD/cabin	kg	2,170–2,350*	2,000/2,150*	2,380/2,520*	2,800 – 3,300*	3,400	3,900	4,300	4,600	5,100	5,800	5,930	7,140	10,390	11,250
Break out force (according to ISO 14397-2)	daN	2,170	1,280	1,989	2,758	4,269	4,427	4,128	5,620	5,620	3,513	4,034	4,032	6,237	6,036
Bucket capacity	m³	0.19	0.19	0.30	0.42	0.47	0.62	0.64	0.80	0.85	0.90	1.00	1.10	1.55	1.80
Bucket tipping load (according to ISO 14397 – EN474-3) lifting mast horizontal - machine straight	kg	1,550–1,620*	1,215/1,437*	1,393/1,958*	1,910 – 2,640*	2,032/2,269*	2,925/3,055*	3,719	3,200/3,327*	3,949	3,270/3,583*	3,674	4,762	6,529	7,739
Bucket tipping load (according to ISO 14397 – EN474-3) lifting mast horizontal - machine pivoted	kg	1,210–1,320*	977/1,206*	1,144/1,703*	1,600 – 2,200*	1,692/1,898*	2,443/2,539*	3,113	2,736/2,845*	3,416	2,761/3,045*	3,031	3,926	5,748	6,674
Pallet fork tipping load (according to ISO 14397 - EN474-3) lifting mast horizontal - machine straight	kg	1,110–1,160*	904/970*	1,096/1,536*	1,550 – 2,140*	1,731/1,908*	2,615/2,716*	3,170	2,478/2,562*	3,055	3,035/3,270*	3,344	4,254	5,371	6,851
Pallet fork tipping load (according to ISO 14397 - EN474-3) lifting mast horizontal - machine pivoted	kg	860–940*	719/866*	975/1,339*	1,310 – 1,800*	1,459/1,605*	2,200/2,276*	2,662	2,126/2,204*	2,555	2,599/2,813*	2,791	3,559	4,728	5,946
Operator's stand (optional)	–	FSD (EPS, cabin)	FSD (EPS, cabin)	FSD (EPS, cabin)	FSD (EPS, cabin)	FSD (cabin)	FSD (cabin)	Cab	FSD (cabin)	Cab	FSD (cabin)	Cab	Cab	Cab	Cab
Travel speed (optional)	km/h	0–15	0–20	0–20	0–20 (30)	0–20 (28)	0–20 (28)	0–20 (28)	0–20 (30)	0–20 (30)	0–20 (30)	0–20 (30/40)	0–20 (30/40)	0–20 (40)	0–20 (40)
Fuel tank capacity	l	–	20	45	50	65	55	65	82	82	82	105	105	140	140
Hydraulic oil tank capacity	l	20	20	27	30	35	65	50	66	66	66	95	95	125	125
HYDRAULIC SYSTEM		UNIT													
Drive hydraulics working pressure (optional)	bar	–	330 (450)	450	400 (470)	450	450	445	450	450	445	445	445	445	480
Work hydraulics discharge volume (optional)	l/min	32	30.8	45	41.6 (49.5–84)	56 (63–100)	57.5 (73.6)	56 (63–116)	58.5 (64–115)	73.6 (83–115)	64	100 (115/150)	100 (115/150)	150 (180)	180
Work hydraulics working pressure	bar	225	225	185	210	210	210	210	220	220	210	210	210	250	250
DRIVE SYSTEM		UNIT													
Drive type/drive system	–	Electrically via universal joint shaft	Hydrostatic via universal joint shaft	Hydrostatic via universal joint shaft	Electronically controlled hydrostatic drive via universal joint shaft	Hydrostatic via universal joint shaft	Hydrostatic via universal joint shaft	Hydrostatic via universal joint shaft	Hydrostatic via universal joint shaft	Hydrostatic via universal joint shaft	Hydrostatic via universal joint shaft	Hydrostatic via universal joint shaft	Hydrostatic via universal joint shaft	Hydrostatic via universal joint shaft	Hydrostatic via universal joint shaft
NOISE CHARACTERISTIC VALUES		UNIT													
Average sound power level LwA	dB (A)	91.8	98.4	100.1/99.7	99	99.8	99.5	99.3	100.2	100.3	100.5	101	101	100.7	100.7
Guaranteed sound power level LwA	dB (A)	92	101	101	101	101	101	101	101	101	101	103	103	102	102
Specified sound pressure level LpA	dB (A)	76	84	85/82	84	82	75	78	78	78	75	78	78	70	70

* Values with cab and optional equipment

BATTERY

		WL20e	WL20e	WL20e
		Standard battery	Optional battery	Optional battery
ELECTRIC MOTOR		UNIT		
Motor travel hydraulics	kW	6.5	6.5	6.5
Motor work hydraulics	kW	8.5	8.5	8.5
BATTERY		UNIT		
Battery type	–	Lithium ion	Lithium ion	Lithium ion
Battery voltage	V	48	48	48
Battery capacity (gross)	kWh	14.1	18.7	23.4
Battery weight	kg	132	148	165
Charging time	h	4–6*	3–8*	4–10*
Best possible charging time (from 20% to 90%)	h	4*	2.5*	3.5*
Runtime (uninterrupted)	h	Up to 3.33**	Up to 4.83**	Up to 6.33**

* Charging time depends on the different charging options. Onboard charger 3 kW (standard), with additional onboard charger total 6 kW (option). The following charging plugs are available: 230 V Schuko, 230 V / 16 A CEE (blue), 400 V / 16 A CEE (three-phase), type 2 plug with wallbox (400 V / 16 A).

* The running times of the battery are strongly dependent on the respective operating conditions, the job, and the driving style. This may also mean that a longer running time can be achieved. The specified running times may also be undercut in extreme cases. The specified running times refer to uninterrupted operation and uninterrupted working with the machine.

The Wacker Neuson product range includes over 300 different product series with different versions. The product data may vary accordingly with the selection of different options. Not all Wacker Neuson products listed or shown here are however available or allowed in all countries. The Wacker Neuson products shown are examples and as such are subject to changes. We are happy to make you a specific offer upon request!

Reproduction only with the written approval of Wacker Neuson.

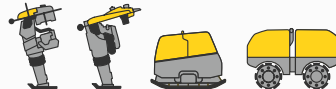
© Wacker Neuson SE

Your everyday work day is full of challenges.
 We have the right solutions and help you to stay ahead of the competition.
 We offer you everything you need for this purpose: **Wacker Neuson – all it takes!**

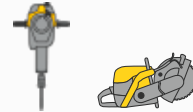
Products



Concrete technology



Compaction



Demolition technology



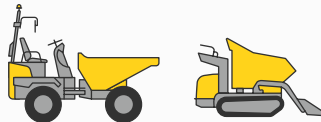
Excavators



Wheel loaders



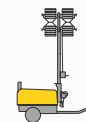
Telehandlers



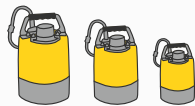
Dumpers



Generators



Lighting



Pumps



Used equipment

www.wackerneuson.com

Services



Financial solutions
 Uncomplicated, transparent and individual financing options.



Repair & maintenance
 First-class and quick maintenance. Repairs with original spare parts.



Academy
 We expand your know-how: practice-oriented and within an ideal learning environment.



EquipCare and EquipCare Pro
 Everything about the machines at a glance, via app or PC – EquipCare.



Rental
 Protect your liquidity and rent top-maintained construction equipment as needed.



ConcreteTec
 Compact precast concrete parts easily, transparently, and in reproducible quality.



Concrete specialists
 Our specialists advise you in all project stages.



eStore
 Buy original spare parts on-line conveniently – for all Wacker Neuson product groups.



Every minute counts:
 Within the shortest period of time, we deliver over 150,000 genuine Wacker Neuson spare parts to your construction site.



WN.EMEA.10094.V10.EN-US

09/2022 EN-US



TikTok
 @wacker.neuson



Facebook
 wackerneuson



Instagram
 @wackerneuson



Youtube
 Wacker Neuson



LinkedIn
 Wacker Neuson