

Skid Steer and Compact Track Loaders



**WACKER
NEUSON**
all it takes!



A new era of productivity.

Today's generation of Wacker Neuson skid steer and compact track loaders is anything but ordinary. Designed, engineered and built in North America to handle the tough stuff, these machines will exceed your expectations. All machines offer the latest in cab design and industry-leading service accessibility.

Performance, Versatility, Convenience.

If you need to lift material to greater heights, the vertical lift units give you a competitive edge when loading trucks and material bins. Our class-leading hinge pin height on vertical lift units offers you maximum loading and unloading capabilities. The variable speed cooling fan increases efficiency, improves fuel economy and assists in cold starts. An intuitively designed, high-visibility cab includes angled pedals and foot bed. In addition, conveniently located switches help reduce operator fatigue. A wide door offers easy access with no restrictive lap bar. Controls ensure that operators with a variety of machine experience can efficiently work with the loaders. The best service access is provided with a cab that fully tips forward with the arms down.

* Please refer to the Warranty Policy for official details including but not limited to limitations, exclusions, handling and administration.

Wacker Neuson — all it takes!

We offer products and services that meet your high requirements and diverse applications. Our medium and large frame skid steer loaders are designed for comfortable operation and optimum performance. The Wacker Neuson skid steers offer you all it takes for all your jobs!

Skid Steer and Compact Track Loaders overview.

Medium Framed Loaders



SW16 Radial Lift

Horsepower: 56 hp
Operating Weight: 6,170 lbs



SW17 Radial Lift

74 hp
6,245 lbs



SW20 Vertical Lift

56 hp
6,437 lbs

> Page 06

Large Framed Loaders



SW24 Radial Lift

Horsepower: 74 hp
Operating Weight: 7,840 lbs



SW28 Vertical Lift

74 hp
8,175 lbs



SW32 Vertical Lift

100 hp
8,629 lbs

> Page 14



CONTROLS
FOR ANY OPERATOR
HAND / FOOT
ISO PATTERN / H PATTERN



Vertical Lift

Vertical lift provides more reach at full height, ideal for dumping and loading trucks with high sides. Because of the vertical path of the arm and bucket hinge height, loading hoppers and using pallet forks just became much easier.



Radial Lift

Radial lift provides more horizontal reach, ideal for loading and unloading flat bed trucks. Due to the radial path, the arm's midpoint extends further away from the machine than the vertical lift configuration.

Match the right machine to your application.

Skid Steer vs. Track Loader Comparison

| | Skid Steer | Track Loader |
|-----------------------------|------------|--------------|
| APPLICATION | | |
| Working on asphalt/concrete | ● | — |
| Demolition | ● | — |
| Excavation on soft surfaces | — | ● |
| Working in muddy conditions | — | ● |
| Low ground disturbance | — | ● |

Vertical vs. Radial Comparison

| | Vertical Lift | Radial Lift |
|-----------------------------------|---------------|-------------|
| APPLICATION | | |
| Pallet fork | ● | — |
| Truck loading | ● | — |
| Post hole auger operation | ● | — |
| Excavation in hard soil | — | ● |
| Heavy lifting to truck bed height | — | ● |



SW21 Vertical Lift

74 hp
6,512 lbs

> Page 06



ST28 Radial Lift

74 hp
7,829 lbs

> Page 12



ST31 Vertical Lift

74 hp
8,095 lbs



All models are built with American pride.



ST35 Radial Lift

74 hp
9,879 lbs



ST40 Radial Lift

100 hp
10,289 lbs



ST45 Vertical Lift

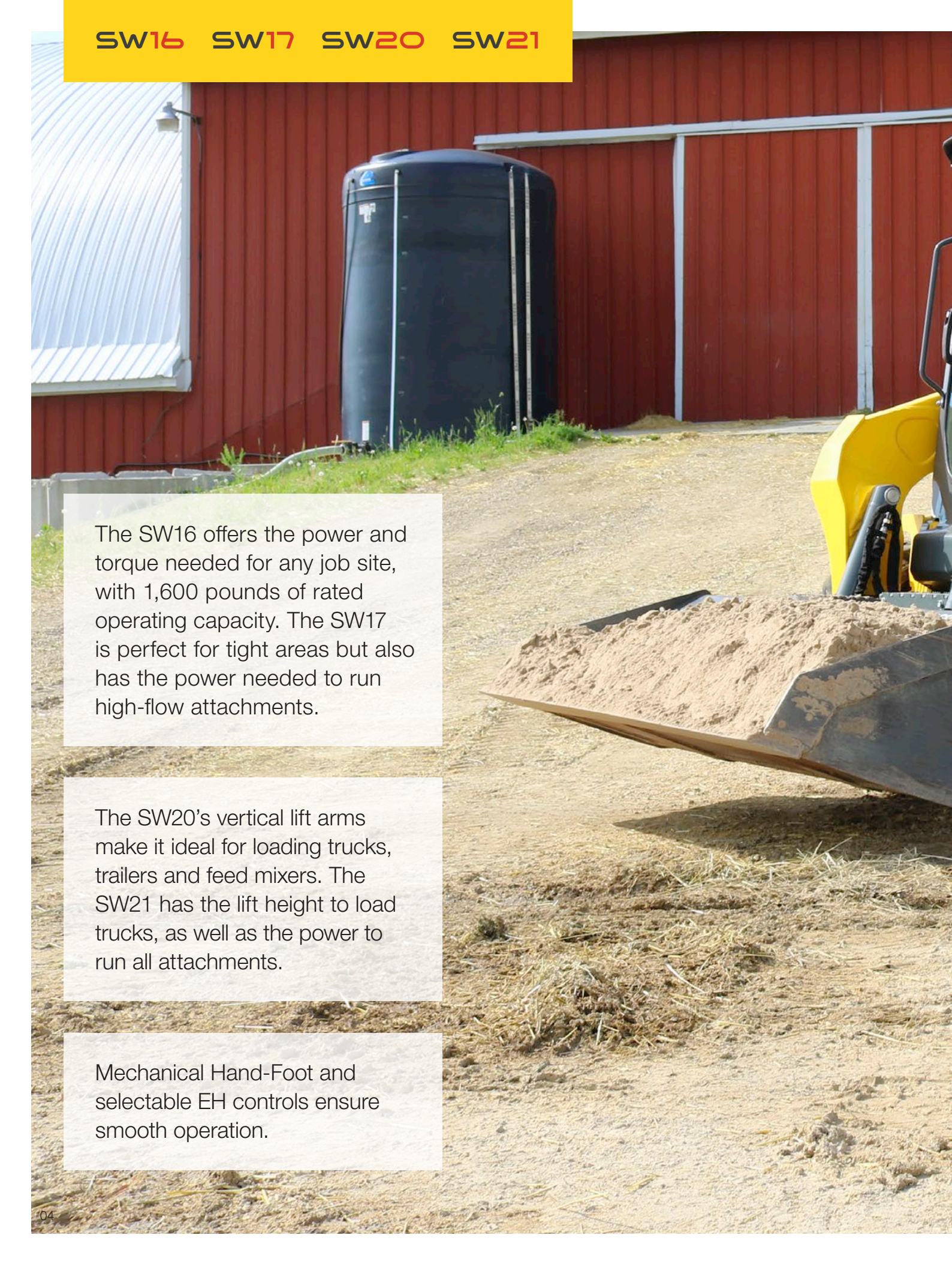
74 hp
10,267 lbs



ST50 Vertical Lift

100 hp
10,677 lbs

> Page 18



The SW16 offers the power and torque needed for any job site, with 1,600 pounds of rated operating capacity. The SW17 is perfect for tight areas but also has the power needed to run high-flow attachments.

The SW20's vertical lift arms make it ideal for loading trucks, trailers and feed mixers. The SW21 has the lift height to load trucks, as well as the power to run all attachments.

Mechanical Hand-Foot and selectable EH controls ensure smooth operation.



Compact, robust and powerful: SW16, SW17, SW20 and SW21.

| | SW16 | SW17 | SW20 | SW21 |
|---------------------------|-------|-------|-------|-------|
| Horsepower (hp) | 56 | 74 | 56 | 74 |
| Operating weight (lbs) | 6,170 | 6,245 | 6,437 | 6,512 |
| ROC @ 50% (lbs) | 1,600 | 1,700 | 2,000 | 2,100 |
| Bucket hinge height (in) | 118.1 | 118.1 | 124.0 | 124.0 |
| Std. hydraulic flow (gpm) | 20 | 20 | 20 | 20 |
| Opt. high flow (gpm) | - | 30 | - | 30 |

Three different types of controls ensure that users with different backgrounds and experience can operate the machine effectively

Tier 4 Final Kohler engines come with industry-leading 4-year, 4,000-hour warranty. Maintenance-free, filter-free and regeneration-free aftertreatment eliminates extreme heat during regeneration



AM-FM radio with bluetooth streaming connectivity

Designed with maintenance access in mind, engine check-points are within easy reach making daily maintenance quick and simple

Provides a panoramic view of the rear of the machine, increasing visibility

Large, illuminated switches give quick accessibility to controls regardless of the time of day or whether the operator is wearing gloves

With the low mounted tilt cylinders and the spaciouly designed door, sloped rear engine compartment, and large side windows, operator visibility is maximized 360°

Cushioned cylinders prevent hard stops when lowering the lift-arms and rolling the bucket back

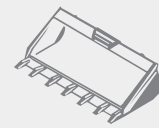
The large fuel tank gives operators 30% more time in the cab, and less time refueling

Compact size allows for easy access on a variety of job sites.



High performance horsepower.

Category-leading hydraulic horsepower in standard and high-flow enables these machines to handle high-performance attachments like rakes, mowers, tillers and augers with ease.



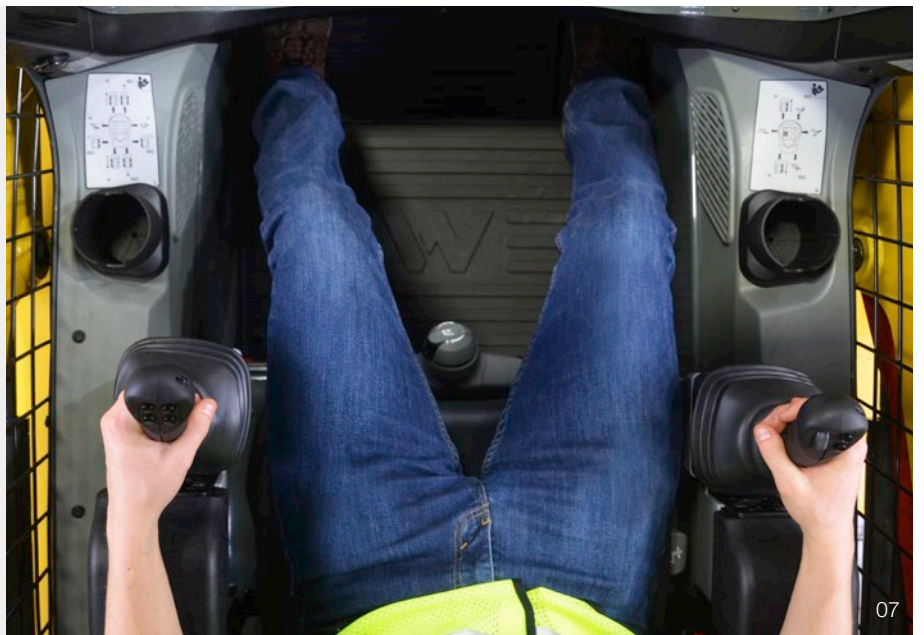
**CLASS LEADING
HYDRAULIC HP**

STAND = 40.3 HP / HF = 61.3 HP

Intuitive, comfortable controls.

Mechanical Hand-Foot and selectable EH options (ISO/H-Pattern) ensure operators with experience using any competitive model can easily operate these machines.

CONTROLS
FOR ANY OPERATOR
HAND / FOOT
ISO PATTERN / H PATTERN

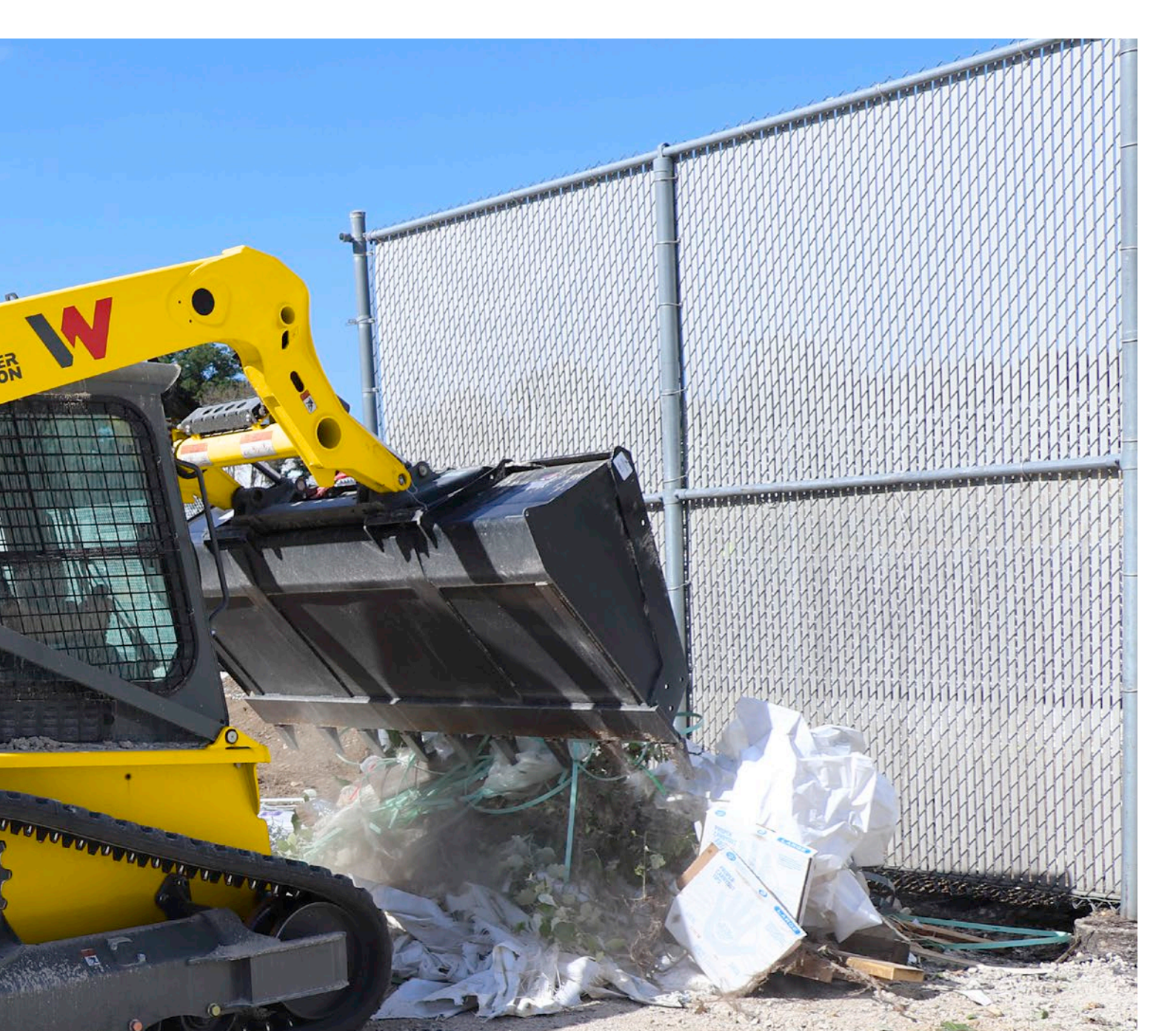




The compact working envelope makes the ST28 great for moving material around confined areas.

The ST31's door width and height offer superior visibility of the attachment and surroundings.

The light pressure of the track machines is less disruptive to ground surfaces.



Compact and powerful: ST28 and ST31.

| | ST28 | ST31 |
|---------------------------|--------------|--------------|
| Horsepower (hp) | 74 | 74 |
| Operating weight (lbs) | 7,829 | 8,095 |
| ROC @ 50% (lbs) | 2,800 | 3,100 |
| Bucket hinge height (in) | 119.6 | 125.5 |
| Std. hydraulic flow (gpm) | 20 | 20 |
| Opt. high flow (gpm) | 30 | 30 |

Optional high-flow hydraulics increase the range of usable attachments, improving efficiency and productivity

With a maximum hinge pin height of 125.5" the capabilities of loading and unloading are maximized

Joysticks are mounted to the suspension/air ride seat minimizing unwanted movements in rough conditions

A wide door and step as well as ergonomically located handles, make entry and exit easy

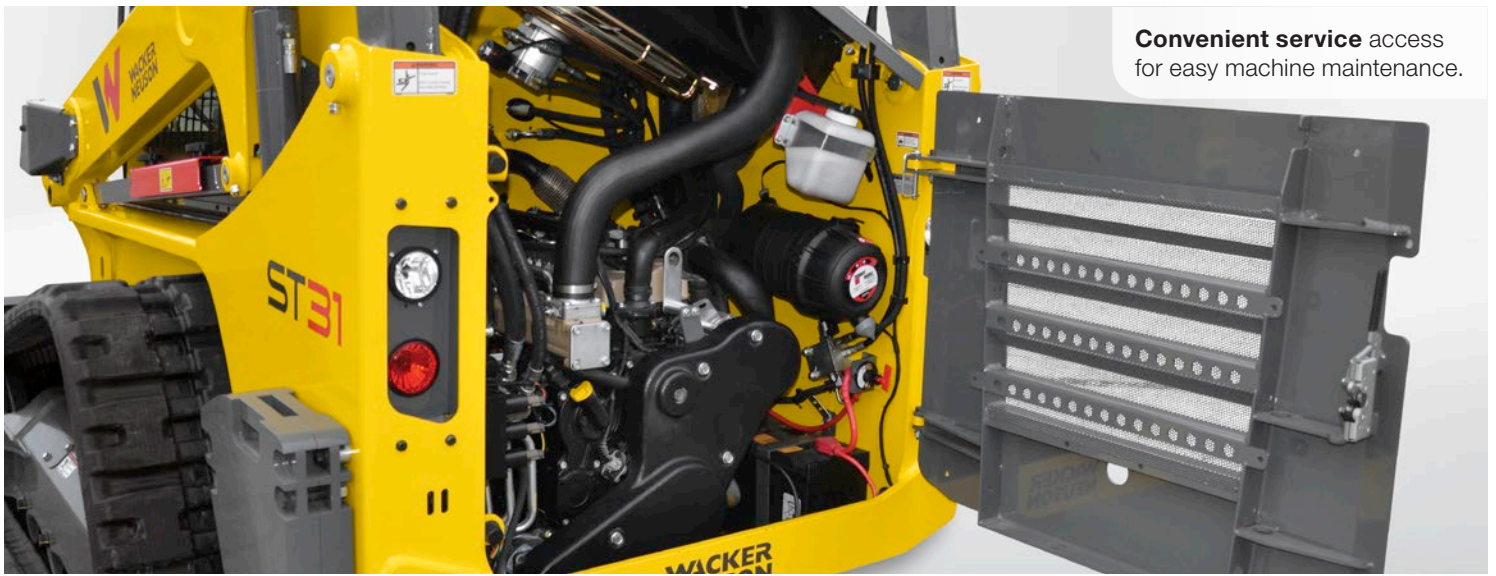
The forward tipping cab allows to fully tip with the arms down and allows full access to critical hydraulic components regardless of lift arm position

With a top speed of nearly 10 MPH, travel time is reduced giving the operator more time to focus on job site tasks

Combination of single, double and triple idlers help ensure a smooth, quiet ride

Class leading track-on-ground of 57.2" decreases ground pressure





Convenient service access for easy machine maintenance.

Torque for all terrain.

An engine torque of 221 foot-pounds provides the power needed for improved ground-engaging performance in all kinds of terrain.

221 ft-lb
CLASS LEADING
ENGINE TORQUE



Tracks.

15.7"/400 mm (option)

A change in the weather doesn't mean a change in plans. High-floatation tracks enable these loaders to work where rubber tire machines can't.

Heavy-duty Tracks

Heavy-duty double-steel reinforced rubber tracks last longer than those on other machines. Easy-clean undercarriage shortens end-of-day cleanout and reduces wear due to dirt buildup.

Elevated Sprocket Design

Elevated sprockets shed mud and debris as you work, reducing wear.

Forged Steel Rollers and Idlers

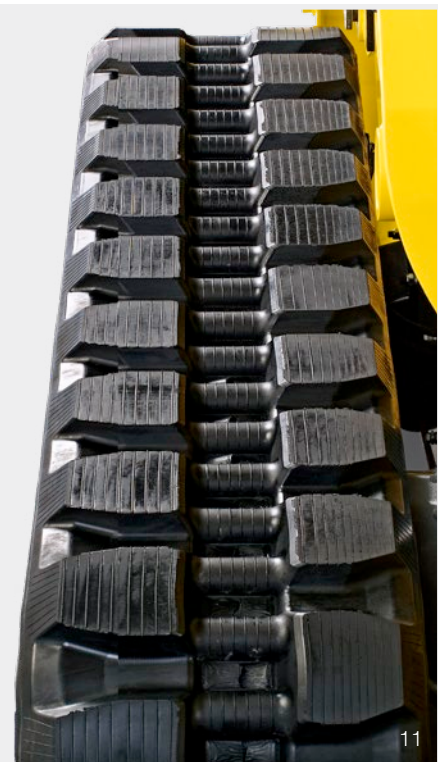
Triple-flanged, forged steel rollers and single-flange steel idlers minimize de-tracking, improve ride, extend track life and are more durable than rubber coated rollers.


Simple Maintenance

When it's time to adjust track tension, all it takes is a common grease gun. Idlers and rollers are permanently sealed and lubricated.

Embedded Steel

Tough steel braces guide and support the track when engaging the drive sprocket.

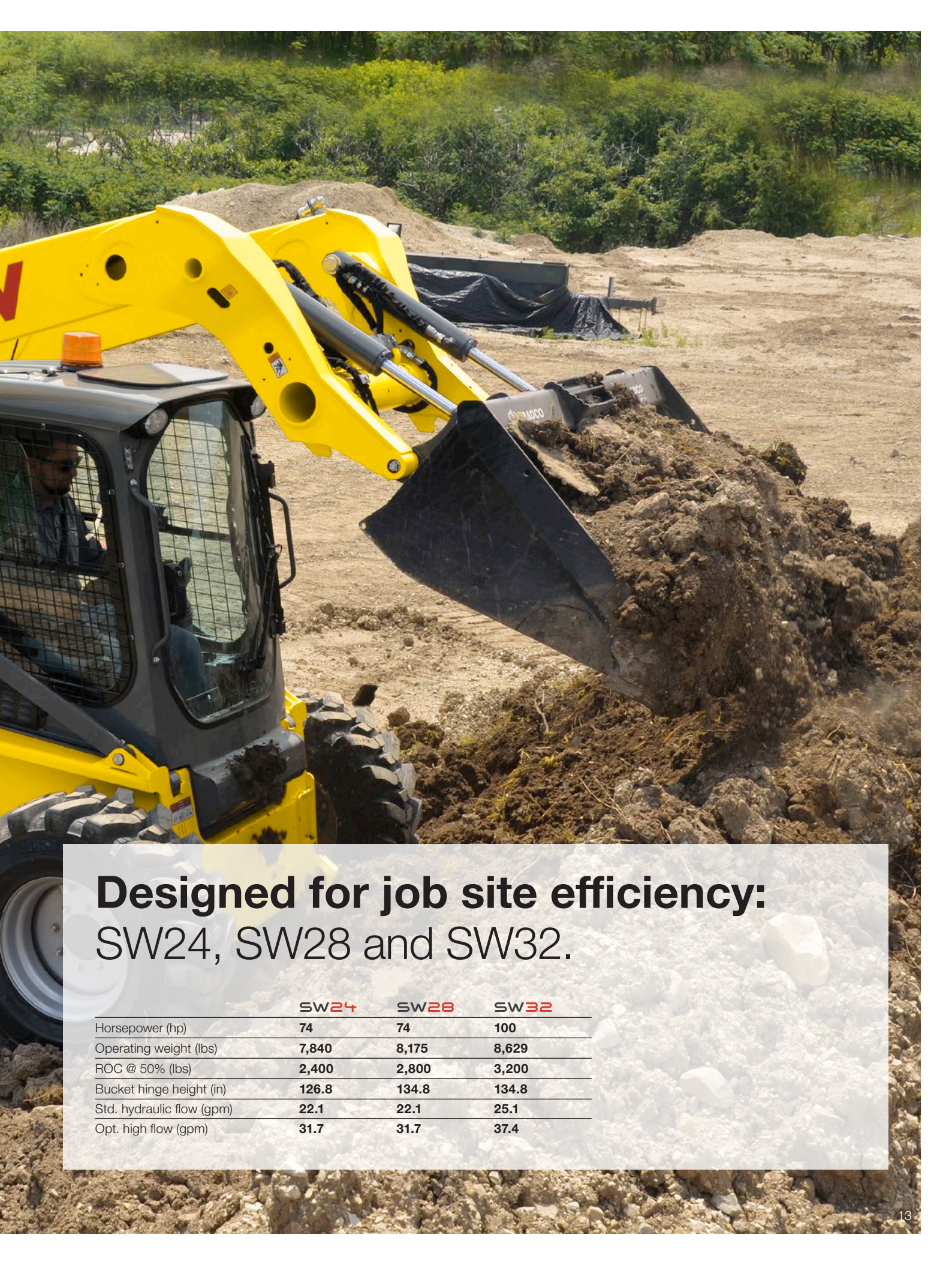




The SW24 is the next level digging and pushing machine and brings power and efficiency to any job site.

The SW28 with the vertical lift arms is ideal for material handling and especially great for operators who need added lift capacity.

The SW32 offers maximum power for every job site and increases productivity.



Designed for job site efficiency: SW24, SW28 and SW32.

| | SW24 | SW28 | SW32 |
|---------------------------|-------------|-------------|-------------|
| Horsepower (hp) | 74 | 74 | 100 |
| Operating weight (lbs) | 7,840 | 8,175 | 8,629 |
| ROC @ 50% (lbs) | 2,400 | 2,800 | 3,200 |
| Bucket hinge height (in) | 126.8 | 134.8 | 134.8 |
| Std. hydraulic flow (gpm) | 22.1 | 22.1 | 25.1 |
| Opt. high flow (gpm) | 31.7 | 31.7 | 37.4 |

Optional high flow hydraulics increases the range of usable attachments, improving efficiency and productivity

Radial path lift arms are ideal forground engaging applications and have better reach to truck bed height (only SW24)

Hydraulically driven variable speed fan operates on an as-needed basis allowing faster warm-up times of the engine and significantly reducing noise

Spacious extended cab maximizes room and operator comfort

Quick and easy service access from the forward tilting cab and the arrangement of internal components simplify maintenance

Standard two-speed transmission helps operators move quickly and more efficiently

Three different types of controls ensure that operators with different backgrounds or experience can efficiently operate the machine

Pre-cleaner utilizes engine exhaust to remove particulate from engine air filter to extend service intervals

Compact and durable – rugged cast iron axle housing



Cab forward design moves the operator closer to the attachment for a better vantage point.



The ability to see both leading and cutting edges ensures the operator is more confident and precise during operation.



Smart Exhaust System.

The engine exhaust is uniquely located in front of the cooling fan exhaust in order to mix and direct both air streams vertically away from the machine. This enables the machine to work in close quarters without concerns of the exhaust blowing on walls or the ground around the machine.

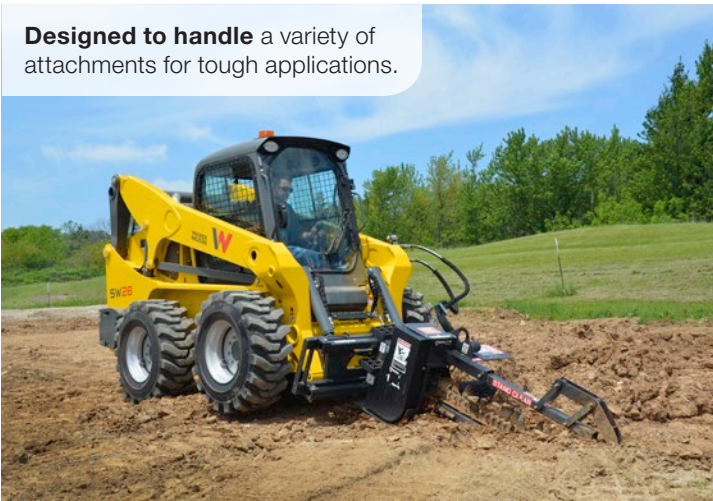


Accessibility.

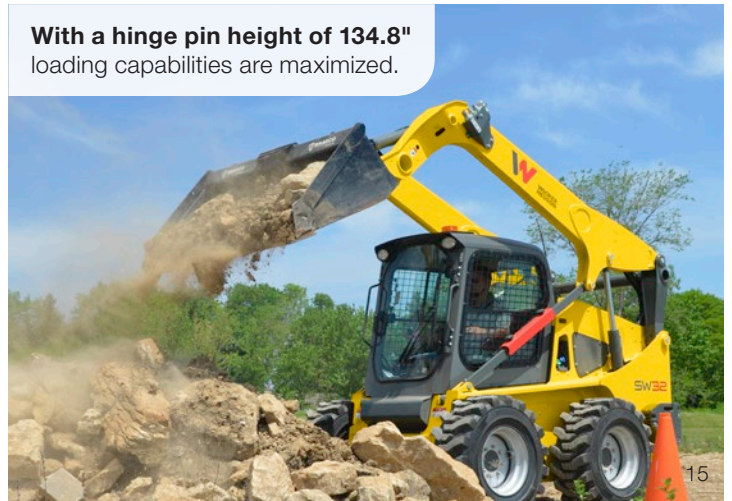
- Best-in-class daily maintenance service access with a simple design and efficient layout means less time on daily service checks and more time on the job.
- Cab fully tips forward with the arms down providing complete access to all maintenance components.




Designed to handle a variety of attachments for tough applications.



With a hinge pin height of 134.8" loading capabilities are maximized.



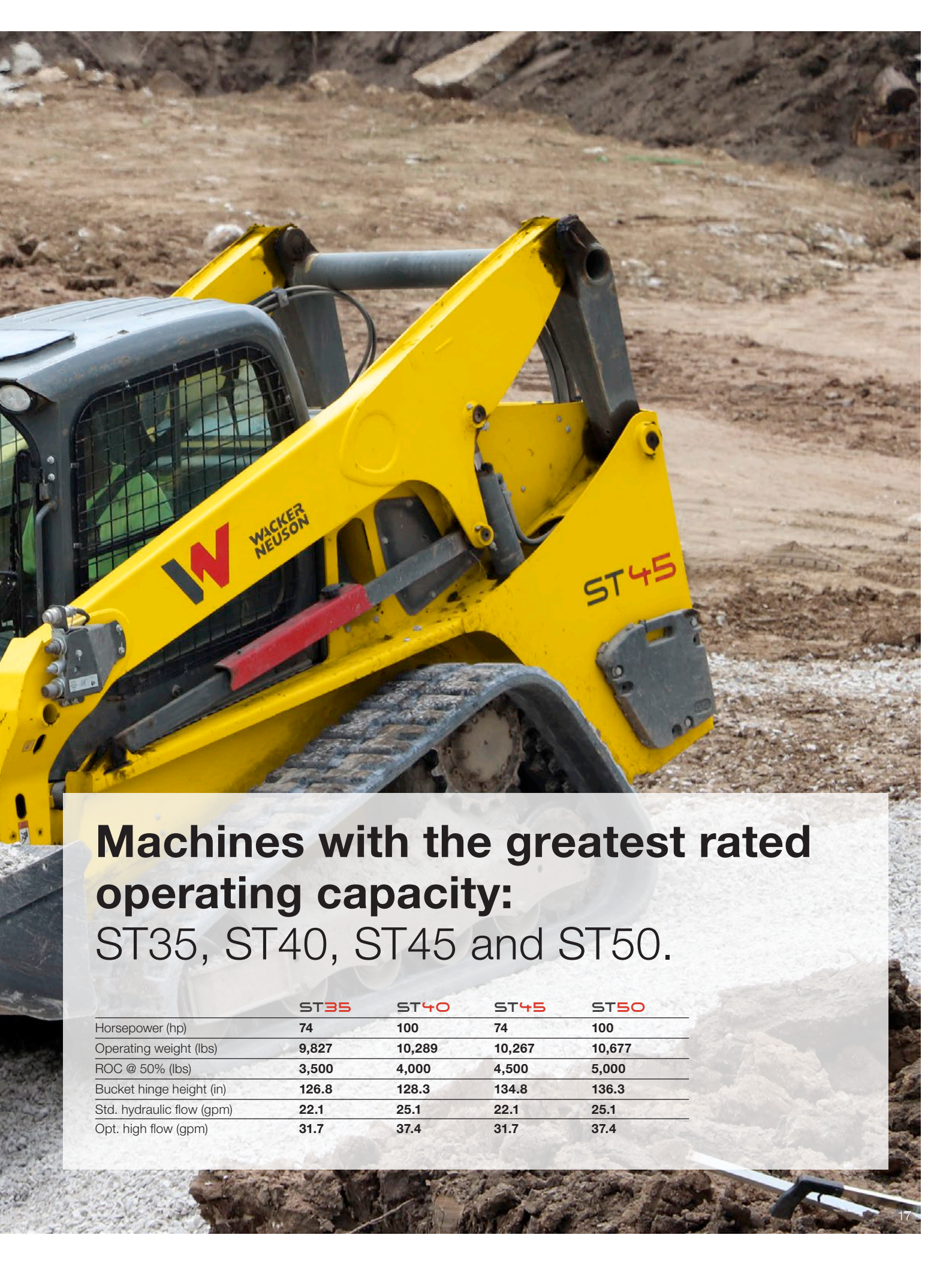


The 100 HP engine is a force of nature that comes loaded with high-pressure injection, a turbo-charger, and up to 368 foot-pounds of torque. It was born to take on jobs other engines can't.

All loaders come with a diesel oxidation catalyst (DOC) and selective catalytic reduction (SCR*) as an exhaust after treatment.

Machines come standard with a two-year warranty.

* 100 hp models



Machines with the greatest rated operating capacity: ST35, ST40, ST45 and ST50.

| | ST35 | ST40 | ST45 | ST50 |
|---------------------------|-------------|-------------|-------------|-------------|
| Horsepower (hp) | 74 | 100 | 74 | 100 |
| Operating weight (lbs) | 9,827 | 10,289 | 10,267 | 10,677 |
| ROC @ 50% (lbs) | 3,500 | 4,000 | 4,500 | 5,000 |
| Bucket hinge height (in) | 126.8 | 128.3 | 134.8 | 136.3 |
| Std. hydraulic flow (gpm) | 22.1 | 25.1 | 22.1 | 25.1 |
| Opt. high flow (gpm) | 31.7 | 37.4 | 31.7 | 37.4 |

Dual beam work lights double the amount of light output making it an ideal option for night applications such as snow removal and farming (optional)

Low mounted tilt cylinders increase visibility of the attachment

Expansive door allows for easy entry and exit

Common cab and machine layout across the entire product line means a reduced number of spare parts to stock

Rear exhaust located away from the rear of the machine and mixed with engine air to evacuate heat. The perfect feature for machines operating in confined areas such as barns

Faster block is recessed behind the front of the lift arm to prevent impacts with attachments while a cover on the back protects the hose connections

Handles of quick coupler are designed to be steps to prevent damage to cylinder



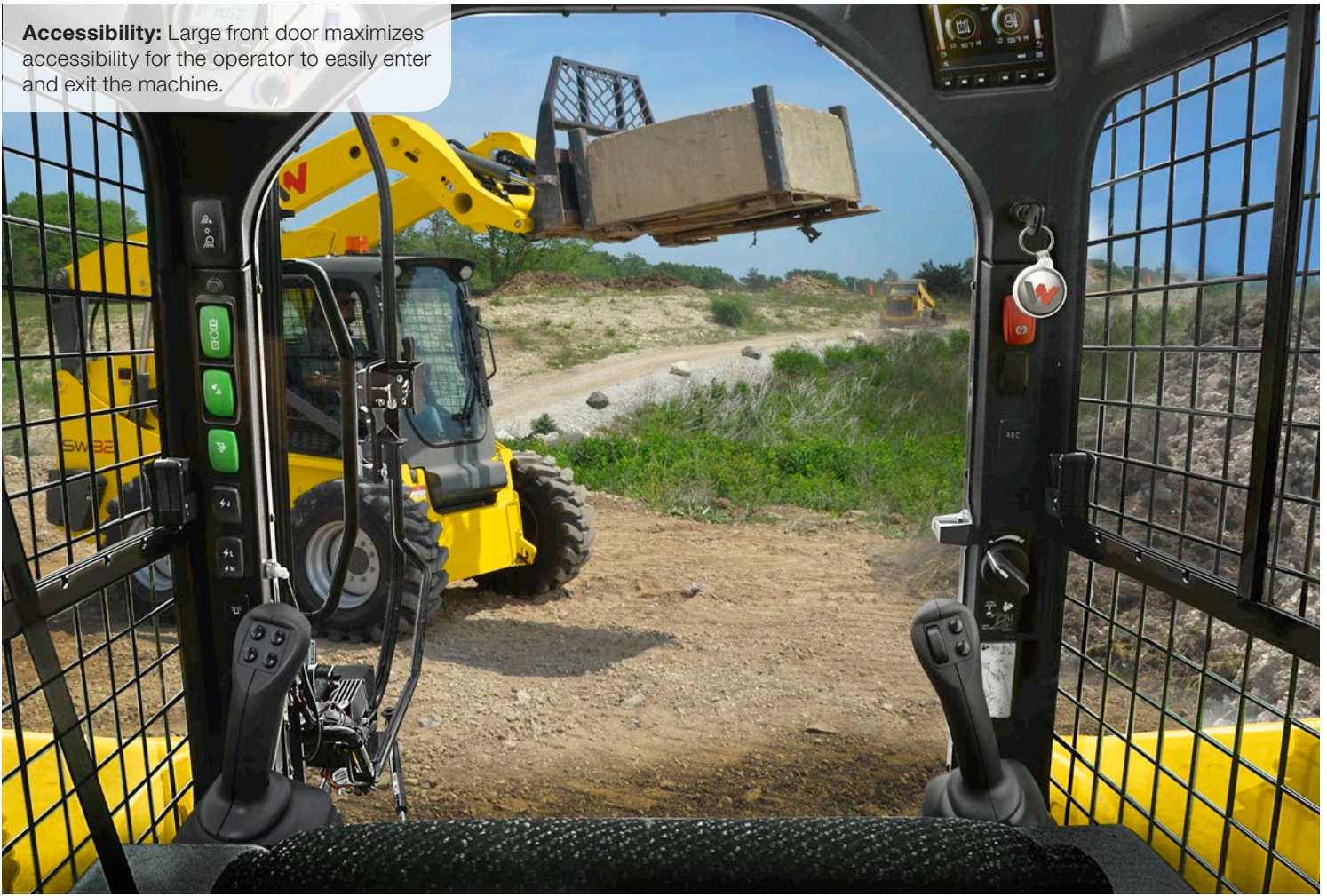
Optional bolt-on counterweights increase lift capacity

Open track design minimizes build up of dirt while making it easier to clean out

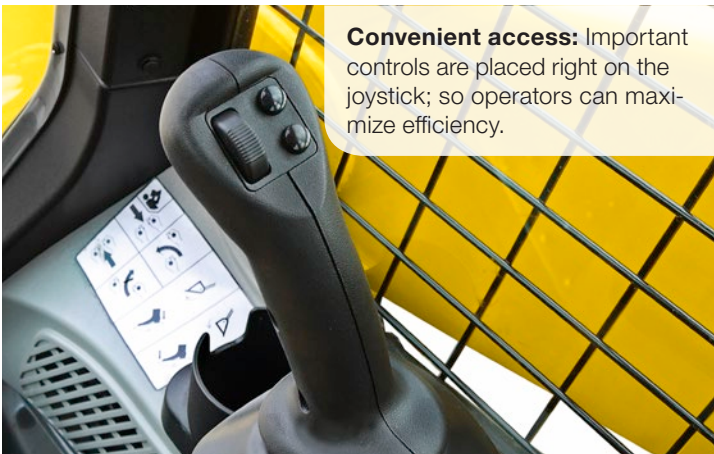
The top bushing on the tilt cylinders contain filament wound composite bushings to keep grease off of operators entering and exiting the machine

Hydraulic oil and diesel fuel are located on opposite sides of the machine to reduce the chances of accidental mixing

Accessibility: Large front door maximizes accessibility for the operator to easily enter and exit the machine.



Convenient access: Important controls are placed right on the joystick; so operators can maximize efficiency.



Reliable on any job site— proven to stand up to the most rugged conditions.



Accessibility where you need it.

Forward-tipping cab provides ample room to access the key components of the machine. Rear engine door opens out while the top access door tilts up providing accessibility to nearly 100% of the engine components.



Versatility that will stretch your productivity.

Wacker Neuson understands the value of accomplishing more tasks in less time. That's why we designed our skid steer and compact track loaders with a standard universal skid steer attachment plate and a faster hydraulic block that enables attachments to be switched out easily. Superior hydraulic horsepower in standard and high-flow enables these machines to handle high-performance attachments like rakes, mowers, tillers and augers with ease, adding to your capabilities. In addition, the large-capacity fuel tanks give operators more time in the cab and less time refueling. It all adds up to a better bottom line.

Mechanical Universal Attachment Plate: All models come standard with an easy-to-use mechanical universal attachment plate which is compatible with most skid steer attachments in the marketplace.



Hydraulic Universal Attachment Plate (optional on all machines) allows the operator to quickly and easily install and remove attachments without ever leaving the cab.



Compatible Attachments.

- Ag forks
- Augers
- Bale spears (round, square)
- Blades (snow, utility)
- Breakers/hammers
- Brooms (angle, pickup)
- Cold planers
- Dozer blades
- Grapples (ag utility, brush-tined, scrap)
- Landplanes
- Mulching head
- Multipurpose buckets
- Pallet forks
- Power rakes
- Rock buckets
- Roller levels
- Rotary cutters
- Rotary tillers
- Scrapers (material, manure)
- Side-discharge buckets
- Snow blowers
- Snow pushers
- Toothbar
- Trenchers

Easy-to-change attachments:

All machines come standard with faster hydraulic blocks for quick changing of hydraulic attachments. By pressing on the coupler, trapped pressure is relieved to the tank, making it easy to attach the lines.



See website for more options.

Standard equipment and options.

SW16 SW17 SW20 SW21 SW24 SW28 SW32 ST28 ST31 ST35 ST40 ST45 ST50

STANDARD FEATURES

| | | | | | | | | | | | | | |
|---|----|----|----|----|---|---|---|---|---|---|---|---|---|
| Open Canopy w/Side Screens | ● | ● | ● | ● | ● | ● | ● | ● | ● | ● | ● | ● | ● |
| Closed Cabin w/HVAC | ○ | ○ | ○ | ○ | ○ | ○ | ○ | ○ | ○ | ○ | ○ | ○ | ○ |
| Polycarbonate Demolition Door | ○ | ○ | ○ | ○ | ○ | ○ | ○ | ○ | ○ | ○ | ○ | ○ | ○ |
| Static Sliding Seat | ● | ● | ● | ● | — | — | — | — | — | — | — | — | — |
| Mechanical Suspension Seat | ○ | ○ | ○ | ○ | ● | ● | ● | ● | ● | ● | ● | ● | ● |
| Air-Ride Seat (also heated seat available) | ○ | ○ | ○ | ○ | ○ | ○ | ○ | ○ | ○ | ○ | ○ | ○ | ● |
| Mechanical Hand-Foot Controls | ● | ● | ● | ● | ● | ● | — | ● | ● | — | — | — | — |
| EH Joystick Controls - ISO/H Pattern Switchable | ○ | ○ | ○ | ○ | ○ | ○ | ● | ○ | ○ | ● | ● | ● | ● |
| EH Hand Foot Controls | — | — | — | — | ○ | ○ | ○ | — | — | ○ | ○ | ○ | ○ |
| Hydraulic Coupler | ○ | ○ | ○ | ○ | ○ | ○ | ○ | ○ | ○ | ○ | ○ | ○ | ○ |
| Anti-Corrosion Coating | ○ | ○ | ○ | ○ | ○ | ○ | ○ | ○ | ○ | ○ | ○ | ○ | ○ |
| Single Speed Drive | ● | ● | ● | ● | — | — | — | ● | ● | — | — | — | — |
| Two Speed Drive | ○ | ○ | ○ | ○ | ● | ● | ● | ○ | ○ | ● | ● | ● | ● |
| Variable Speed Cooling Fan | ○ | ○ | ○ | ○ | ● | ● | ● | ○ | ○ | ● | ● | ● | ● |
| High Flow Auxiliary | ○ | ○ | ○ | ○ | ○ | ○ | ○ | ○ | ○ | ○ | ○ | ○ | ○ |
| 14-Pin Attachment Control | ○ | ○ | ○ | ○ | ○ | ○ | ○ | ○ | ○ | ○ | ○ | ○ | ○ |
| 3" Monocolor Standard Display | ● | ● | ● | ● | ● | ● | — | ● | ● | — | — | — | — |
| 5.7" Color Display | ○ | ○ | ○ | ○ | ○ | ○ | ● | ○ | ○ | ● | ● | ● | ● |
| Rearview Camera (5.7" display req'd) | ○ | ○ | ○ | ○ | ○ | ○ | ○ | ○ | ○ | ○ | ○ | ○ | ○ |
| 170 lbs/340 lbs/510 lbs Rear Counterweight | ○* | ○* | ○* | ○* | ○ | ○ | ○ | ○ | ○ | ○ | ○ | ○ | ○ |
| 250 lbs Front Counterweight | — | — | — | — | ○ | ○ | ○ | — | — | ○ | ○ | ○ | ○ |
| AM/FM/MP3 Bluetooth Radio | ○ | ○ | ○ | ○ | ○ | ○ | ○ | ○ | ○ | ○ | ○ | ○ | ○ |
| Dual Beam Worklights | ○ | ○ | ○ | ○ | ○ | ○ | ○ | ○ | ○ | ○ | ○ | ○ | ○ |
| Strobe Beacon | ○ | ○ | ○ | ○ | ○ | ○ | ○ | ○ | ○ | ○ | ○ | ○ | ○ |
| Hazard Light Package (strobe + 4-way flashers) | ○ | ○ | ○ | ○ | ○ | ○ | ○ | ○ | ○ | ○ | ○ | ○ | ○ |
| Ride Control | ○ | ○ | ○ | ○ | ○ | ○ | ○ | ○ | ○ | ○ | ○ | ○ | ○ |
| One-Way Bucket Leveling | ○ | ○ | ○ | ○ | ○ | ○ | ○ | ○ | ○ | ○ | ○ | ○ | ○ |
| Zero-Drift Hydraulic Valve | ○ | ○ | ○ | ○ | ○ | ○ | ○ | ○ | ○ | ○ | ○ | ○ | ○ |
| Cyclonic Engine Pre-Cleaner | ○ | ○ | ○ | ○ | ○ | ○ | ○ | ○ | ○ | ○ | ○ | ○ | ○ |
| Exhaust Scavenging Pre-Cleaner | — | — | — | — | ○ | ○ | ○ | — | — | ○ | ○ | ○ | ○ |
| High Capacity Fuel Tank (50 gal) | — | — | — | — | — | — | — | — | — | ○ | ○ | ○ | ○ |
| Block Heater | ○ | ○ | ○ | ○ | ○ | ○ | ○ | ○ | ○ | ○ | ○ | ○ | ○ |
| Synthetic Hydraulic Oil | ○ | ○ | ○ | ○ | ○ | ○ | ○ | ○ | ○ | ○ | ○ | ○ | ○ |

● Standard Equipment ○ Optional Equipment — Not available

* Not available for 510lbs Rear Counterweight

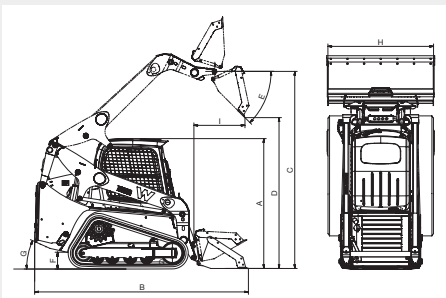
Technical data.

TECHNICAL DATA

| | | SW16 | SW17 | SW20 | SW21 | SW24 | SW28 |
|---|---------------------|--|--|--|--|--|--|
| | UNIT | | | | | | |
| Operating Weight | lb (kg) | 6,170 (2,799) | 6,245 (2,833) | 6,437 (2,920) | 6,512 (2,954) | 7,840 (3,556) | 8,175 (3,708) |
| Lift Arm Type | | Radial | Radial | Vertical | Vertical | Radial | Vertical |
| ROC 35%/50% (no counterweight) | lb (kg) | — / 1,600 (726) | — / 1,700 (771) | — / 2,000 (907) | — / 2,100 (953) | — / 2,400 (1,089) | — / 2,800 (1,270) |
| Engine Make/Model | | Kohler KDI 1903 with DOC Tier 4 Final 3-cylinder water-cooled turbo diesel | Kohler KDI 2504 with DOC Tier 4 Final 4-cylinder water-cooled turbo diesel | Kohler KDI 1903 with DOC Tier 4 Final 3-cylinder water-cooled turbo diesel | Kohler KDI 2504 with DOC Tier 4 Final 4-cylinder water-cooled turbo diesel | Kohler KDI 3404 with DOC Tier 4 Final 4-cylinder water-cooled turbo diesel | Kohler KDI 3404 with DOC Tier 4 Final 4-cylinder water-cooled turbo diesel |
| Engine Displacement | in ³ (l) | 116 (1.9) | 153 (2.5) | 116 (1.9) | 153 (2.5) | 207 (3.4) | 207 (3.4) |
| Engine Gross Power | hp (kw) | 56.3 (42.0) | 74.3 (55.4) | 56.3 (42.0) | 74.3 (55.4) | 74.3 (55.4) | 74.3 (55.4) |
| Fuel Capacity standard/ high capacity | gal (l) | 30.1 (114.0)/ — | 30.1 (114.0)/ — | 30.1 (114.0)/ — | 30.1 (114.0)/ — | 40.0 (151.4)/ — | 40.0 (151.4)/ — |
| Auxiliary flow standard/ high flow | gal (l)/min | 20 (75.7)/ — | 20 (75.7)/ 30 (113.6) | 20 (75.7)/ — | 20 (75.7)/ 30 (113.6) | 22.1 (83.7)/ 31.7 (120) | 22.1 (83.7)/ 31.7 (120) |
| Auxiliary relief pressure | psi (bar) | 3,500 (241) | 3,500 (241) | 3,500 (241) | 3,500 (241) | 3,500 (241) | 3,500 (241) |
| Tire/Track Size standard/ optional | in (mm) | 10 x 16.5/ 12 x 16.5 | 10 x 16.5/ 12 x 16.5 | 10 x 16.5/ 12 x 16.5 | 10 x 16.5/ 12 x 16.5 | 12 x 16.5/ 14 x 17.5 | 12 x 16.5/ 14 x 17.5 |
| Ground Pressure | psi (kPa) | — | — | — | — | — | — |
| Travel Speed (standard tires) low/high | mph (kph) | 7.2 (11.6)/ 11.6 (18.7) | 7.2 (11.6)/ 11.6 (18.7) | 7.2 (11.6)/ 11.6 (18.7) | 7.2 (11.6)/ 11.6 (18.7) | 7.2 (11.6)/ 11.9 (19.2) | 7.2 (11.6)/ 11.9 (19.2) |
| Breakout Force lift arm/ bucket | lbf (N) | 5,000 (22,200)/ 5,300 (23,600) | 5,000 (22,200)/ 5,300 (23,600) | 5,000 (22,200)/ 5,300 (23,600) | 5,000 (22,200)/ 5,300 (23,600) | 7,500 (33,400)/ 6,950 (30,900) | 8,200 (36,500)/ 6,950 (30,900) |
| Tractive Effort | lbf (N) | 7,625 (34,000) | 7,625 (34,000) | 7,625 (34,000) | 7,625 (34,000) | 9,700 (43,200) | 9,700 (43,200) |

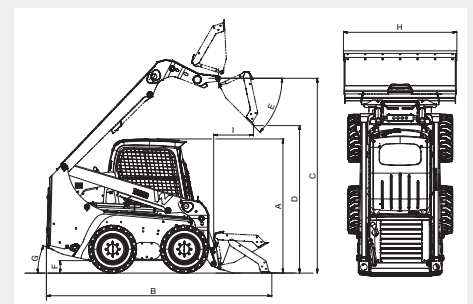
DIMENSIONS

| | | SW16 | SW17 | SW20 | SW21 | SW24 | SW28 |
|----------|--|---------|---------------------------------|---------------------------------|---------------------------------|---------------------------------|---------------------------------|
| | UNIT | | | | | | |
| A | Height to top of ROPS | in (mm) | 81.5 (2,070) | 81.5 (2,070) | 81.5 (2,070) | 81.5 (2,070) | 83.2 (2,113) |
| B | Overall length with standard bucket/ Without bucket | in (mm) | 134.9 (3,425)/ 106.6 (2,708) | 134.9 (3,425)/ 106.6 (2,708) | 134.9 (3,425)/ 106.6 (2,708) | 134.9 (3,425)/ 106.6 (2,708) | 145.4 (3,694)/ 117.5 (2,985) |
| C | Bucket hinge pin max height | in (mm) | 118.1 (3,000) | 118.1 (3,000) | 124.0 (3,150) | 124.0 (3,150) | 126.8 (3,220) |
| D | Bucket max dump height (standard bucket) | in (mm) | 90.6 (2,300) | 90.6 (2,300) | 96.5 (2,450) | 96.5 (2,450) | 99.8 (2,534) |
| E | Bucket dump angle at max height | Degrees | 42 | 42 | 42 | 42 | 44 |
| F | Ground clearance | in (mm) | 7.6 (192) | 7.6 (192) | 7.6 (192) | 7.6 (192) | 9.0 (228) |
| G | Angle of departure | Degrees | 24 | 24 | 24 | 24 | 23 |
| H | Overall width (standard tracks/tires) | in (mm) | 65.9 (1,675) | 65.9 (1,675) | 65.9 (1,675) | 65.9 (1,675) | 71.9 (1,826) |
| I | Dump reach at max height | in (mm) | 28.1 (714) | 28.1 (714) | 37.9 (964) | 37.9 (964) | 29.7 (754) |



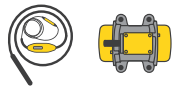
| SW32 | ST28 | ST31 | ST35 | ST40 | ST45 | ST50 |
|--|--|--|--|--|--|--|
| 8,629 (3,914) | 7,828 (3,551) | 8,095 (3,672) | 9,879 (4,481) | 10,289 (4,667) | 10,267 (4,657) | 10,677 (4,843) |
| Vertical | Radial | Vertical | Radial | Radial | Vertical | Vertical |
| — / 3,200 (1,451) | 1,960 (889) / 2,800 (1,270) | 2,170 (984) / 3,100 (1,406) | 2,450 (1,111) / 3,500 (1,588) | 2,800 (1,270) / 4,000 (1,814) | 3,150 (1,429) / 4,500 (2,041) | 3,500 (1,588) / 5,000 (2,268) |
| Kohler KDI 3404 with DOC-SCR Tier 4 Final 4-cylinder water-cooled turbo diesel | Kohler KDI 2504 with DOC Tier 4 Final 4-cylinder water-cooled turbo diesel | Kohler KDI 2504 with DOC Tier 4 Final 4-cylinder water-cooled turbo diesel | Kohler KDI 3404 with DOC Tier 4 Final 4-cylinder water-cooled turbo diesel | Kohler KDI 3404 with DOC-SCR Tier 4 Final 4-cylinder water-cooled turbo diesel | Kohler KDI 3404 with DOC Tier 4 Final 4-cylinder water-cooled turbo diesel | Kohler KDI 3404 with DOC-SCR Tier 4 Final 4-cylinder water-cooled turbo diesel |
| 207 (3.4) | 153 (2.5) | 153 (2.5) | 207 (3.4) | 207 (3.4) | 207 (3.4) | 207 (3.4) |
| 100.6 (75.0) | 74.3 (55.4) | 74.3 (55.4) | 74.3 (55.4) | 100.6 (75.0) | 74.3 (55.4) | 100.6 (75.0) |
| 40.0 (151.4) / — | 30.1 (114.0) / — | 30.1 (114.0) / — | 40.0 (151.4) / 50.0 (189.3) | 40.0 (151.4) / 50.0 (189.3) | 40.0 (151.4) / 50.0 (189.3) | 40.0 (151.4) / 50.0 (189.3) |
| 25.1 (95) / 37.4 (141.5) | 20 (75.7) / 30 (113.6) | 20 (75.7) / 30 (113.6) | 22.1 (83.7) / 31.7 (120) | 25.1 (95) / 37.4 (141.5) | 22.1 (83.7) / 31.7 (120) | 25.1 (95) / 37.4 (141.5) |
| 3,500 (241) | 3,500 (241) | 3,500 (241) | 3,500 (241) | 3,500 (241) | 3,500 (241) | 3,500 (241) |
| 12 x 16.5 / 14 x 17.5 | 12.6 (320) / 15.7 (400) | 12.6 (320) / 15.7 (400) | 17.7 (450) / — | 17.7 (450) / — | 17.7 (450) / — | 17.7 (450) / — |
| — | 5.4 (37.2) | 5.6 (38.6) | 4.4 (30.4) | 4.4 (30.5) | 4.6 (31.6) | 4.6 (31.6) |
| 7.3 (11.7) / 12.2 (19.6) | 7.0 (11.3) / 9.5 (15.3) | 7.0 (11.3) / 9.5 (15.3) | 6.4 (10.3) / 9.6 (15.4) | 6.2 (10.0) / 9.9 (15.9) | 6.4 (10.3) / 9.6 (15.4) | 6.2 (10.0) / 9.9 (15.9) |
| 8,200 (36,500) / 6,950 (30,900) | 5,000 (22,200) / 5,300 (23,600) | 5,000 (22,200) / 5,300 (23,600) | 7,500 (33,400) / 6,925 (30,900) | 7,500 (33,400) / 6,925 (30,900) | 8,200 (36,500) / 6,950 (30,900) | 8,200 (36,500) / 6,950 (30,900) |
| 9,700 (43,200) | 9,875 (43,900) | 9,875 (43,900) | 11,075 (49,300) | 12,600 (56,000) | 11,075 (49,300) | 12,600 (56,000) |

| SW32 | ST28 | ST31 | ST35 | ST40 | ST45 | ST50 |
|----------------------------------|----------------------------------|----------------------------------|----------------------------------|----------------------------------|----------------------------------|----------------------------------|
| 83.2 (2,113) | 83.0 (2,108) | 83.0 (2,108) | 83.2 (2,113) | 84.7 (2,151) | 83.2 (2,113) | 84.7 (2,151) |
| 145.4 (3,694) / 117.5 (2,985) | 136.6 (3,469) / 108.3 (2,752) | 136.6 (3,469) / 108.3 (2,752) | 145.4 (3,694) / 117.5 (2,985) | 145.4 (3,694) / 117.5 (2,985) | 145.4 (3,694) / 117.5 (2,985) | 145.4 (3,694) / 117.5 (2,985) |
| 134.8 (3,425) | 119.6 (3,038) | 125.5 (3,188) | 126.8 (3,220) | 128.3 (3,258) | 134.8 (3,425) | 136.3 (3,463) |
| 107.8 (2,739) | 91.3 (2,319) | 97.2 (2,469) | 99.8 (2,534) | 100.8 (2,560) | 107.8 (2,739) | 108.9 (2,765) |
| 44 | 42 | 42 | 44 | 44 | 44 | 44 |
| 9.0 (228) | 9.1 (230) | 9.1 (230) | 9.0 (228) | 10.5 (266) | 9.0 (228) | 10.5 (266) |
| 23 | 30.7 | 30.7 | 27 | 31 | 27 | 31 |
| 71.9 (1,826) | 67.1 (1,705) | 67.1 (1,705) | 78.0 (1,982) | 78.0 (1,982) | 78.0 (1,982) | 78.0 (1,982) |
| 37.4 (949) | 29.3 (745) | 39.2 (995) | 30.5 (774) | 28.9 (735) | 38.2 (969) | 36.6 (930) |

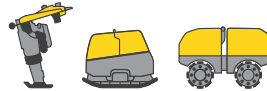


Your work day is full of challenges. We have the right solutions to help you stay ahead of the competition. We offer you everything you need for this purpose: **Wacker Neuson—all it takes!**

Products



Concrete Technology



Compaction



Skid Steer Loaders



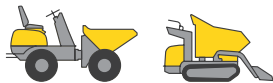
Excavators



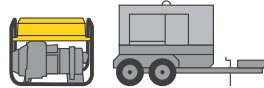
Wheel Loaders



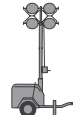
Telehandlers



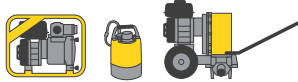
Dumpers



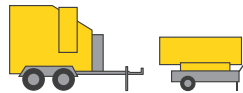
Generators



Lighting



Pumps



Heaters



Used Equipment

Services



University

Practice-focused education within an ideal learning environment.



EquipCare

Fleet management solutions via app for desktop computer.



Genuine Parts

Excellent and fast maintenance. Repairs with original spare parts.



Finance

Uncomplicated, transparent and individual financing options for you.



ePartner

Buy original spare parts online conveniently—for all Wacker Neuson product groups.



Warranty

Factory standard and extended warranties available in the USA and Canada.



Certified Pre-Owned

Used machines from Wacker Neuson—full power, lower prices.

www.wackerneuson.com